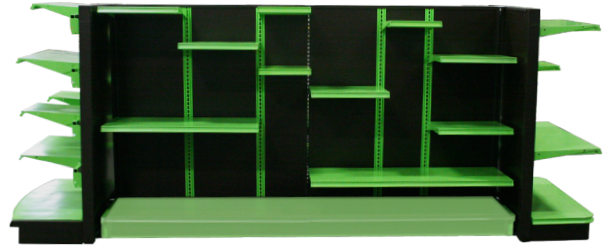


Maxi Slice

Maxi Slice's upright system provides interesting merchandising opportunities by breaking up a common gondola into flexible sections. Give merchandise more 'pop' and cross-sell products by adding shelves and accessories in smaller sections.

Slice gives merchandise the opportunity to have shelves planogrammed to what is needed rather than being restricted to 3' and 4' (914 mm and 1219 mm) sections.

- Our system is unique as it can be used on two sides of a gondola, or only on one side
- Can be installed in existing Madix Maxi Line shelving
- Backs are available in peg, hardboard, and BWGH wire backs

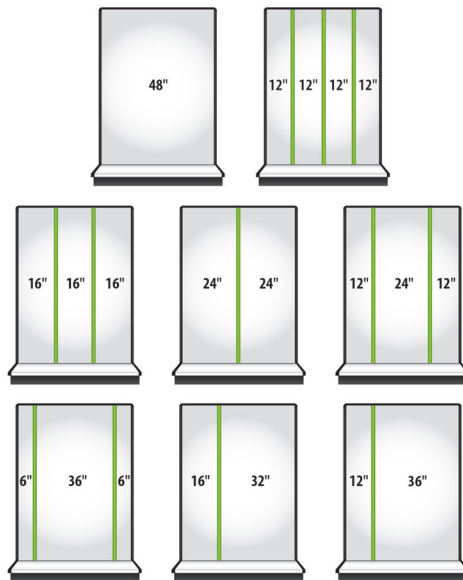


NOTE!

If you order a BWGH Wire Back and a back on the other side, the back could be painted on two sides

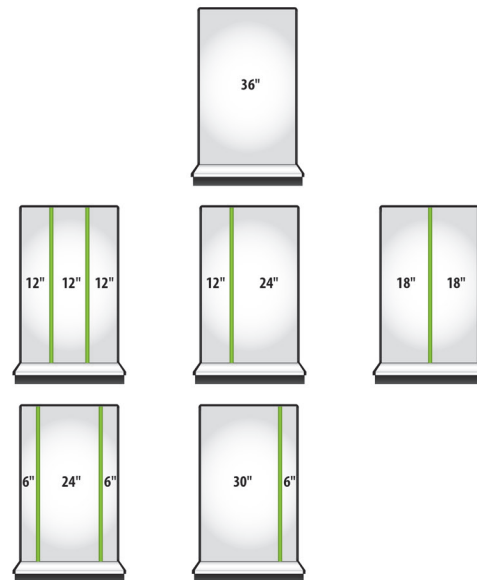
48" Wide Configurations

48" High to 96" High Backs
Hardboard, Peg, and Slatwall



36" Wide Configurations

48" High to 96" High Backs
Hardboard, Peg, and Slatwall



Ordering Information

Order standard gondolas but follow these guidelines:

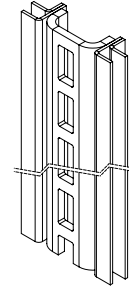
- Order gondola with 3' and 4' (914 mm and 1219 mm) Base Shelves and Kickplates
- Delete Top Spanners
- Delete Center Spanners
- Delete Splicer Spanners (replace with MBS(NW) as needed)
- Delete Backs on Maxi Slice side
- Maxi Slice Upright: Order the height based on gondola height
- Maxi Slice Upright Tie Bar: Two required 48"H to 60"H (1219 mm to 1524 mm), and three required 66"H to 96"H (1676 mm to 2438 mm)
- Mirror Back Splicer: Needed for slice side if 2-piece backs are required. If 2-piece backs are required on other side of wall or 2-sided gondola, MBS is required
- Maxi Slice Top Spanner for Slice: Replaces standard top spanner in gondola
- Standard Madix backs are used for Slice and non-Slice sides
- Recommend ordering shelving runs by parts to receive what you need for your project!

Maxi Slice Upright

- Upright, Maxi Multi Upright System
- Order height based on gondola height
- Order as required

MSSU(NH)

MSSU..... Maxi Slice System Upright
 NH.....Nominal Height 48" to 96" in 6" increments
 (1219 mm to 2438 mm in 152 mm increments)

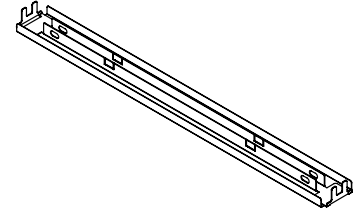


Maxi Slice Top Spanner

- Spanner Top, Maxi Multi Upright System
- Order width based on gondola
- Order 1 per section

MSSST(NW)

MSSST..... Maxi Slice System Spanner Top
 NW.....Nominal Width 3' or 4'
 (914 mm or 1219 mm)



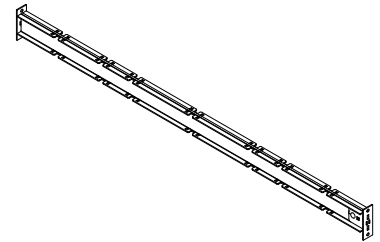
NOTE!
 Rated at 5000 inch lbs with this Top Spanner

Maxi Slice Upright Tie Bar

- Upright Tie Bar, Maxi Multi Upright System
- Order 2 per section, NH 60" and under
- Order 3 per section, NH 66" and 96"
- Hardware Pack included

MSSUTB(NW)

MSSUTB..... Maxi Slice System Upright Tie Bar
 NW.....Nominal Width 3' or 4'
 (914 mm or 1219 mm)



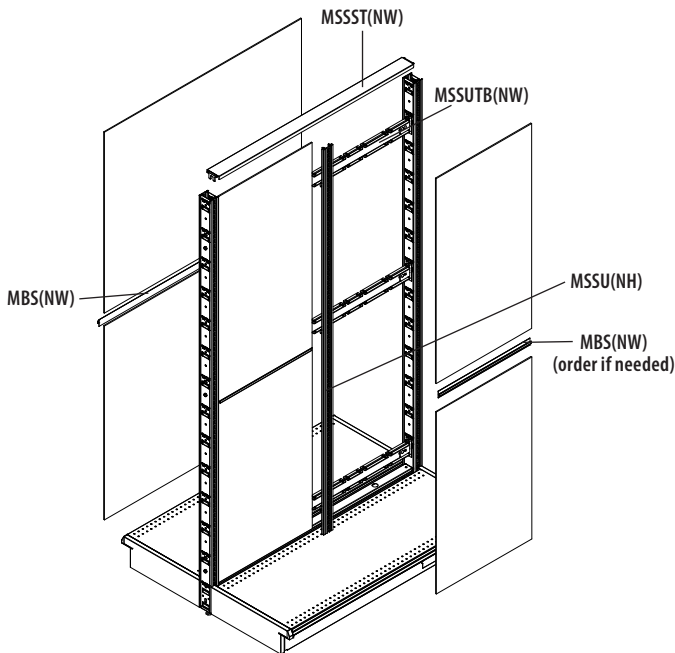
NOTE!
 Leave blank when Aluminum MBS is required

Mirror Back Splicer

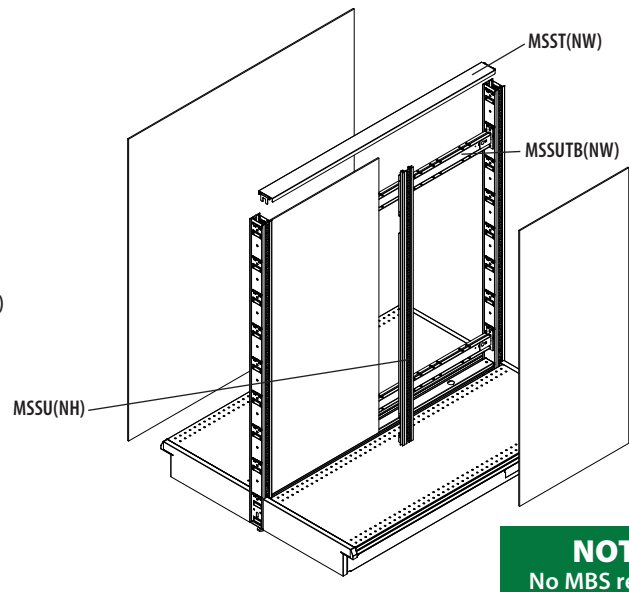
- Splicer, Maxi Multi Upright System
- Used when 2 back are needed or to splice the backs on the non-Maxi Slice side when upper and lower backs are needed
- Standard Splicer Spanners cannot be used with Slice system

MBS-(NW)-PC

MBS..... Mirror Back Splicer
 NW.....Nominal Width 2', 30", 3', 42", 4', 5'
 (610 mm, 762 mm, 914 mm, 1067 mm, 1219 mm, 1524 mm)
 PC.....Powder Coat



78" Gondola with Maxi Slice Installed



54" Gondola with Maxi Slice Installed

NOTE!
 No MBS required

Two-sided Gondola shown can also be used on wall sections