

PHARMACY



madix[®]



madix

CERTIFIED QUALITY A GUARANTEE YOU CAN TRUST

The Industry's Finest Store Fixtures Since 1956

For over sixty years, Madix has collaborated with retailers and brands to develop state-of-the-art solutions to their various merchandising challenges. Each of our products is designed to enhance the store environment for better performance, higher shopper-satisfaction rates, and more sales. Let us help you create the optimum layout for your stores' specific needs; with over thousands of standard, cataloged options available, the possibilities are virtually endless. We'll work with you one-on-one to devise creative, viable methods to make your sales floor and/or storage areas more productive.

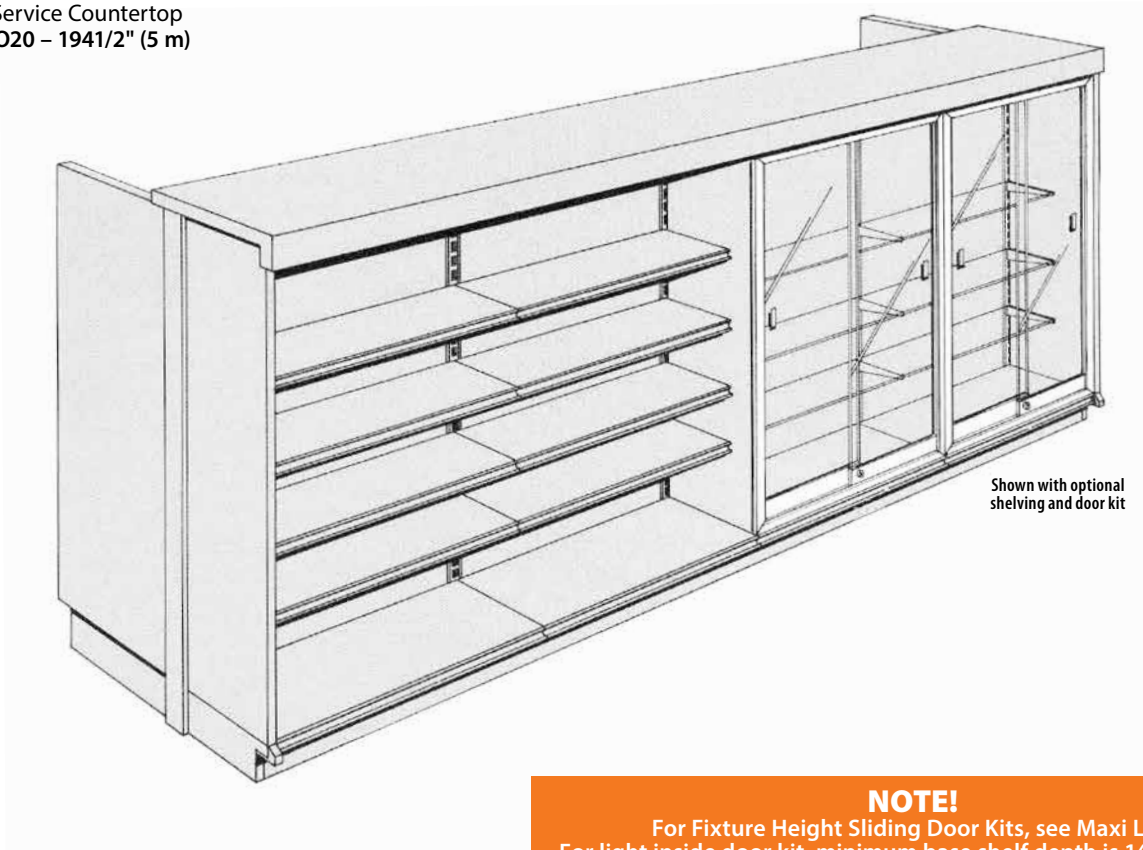


madixinc.com

Texas: 214.515.5400 | Alabama: 256.839.6354

Prescription Service Counter

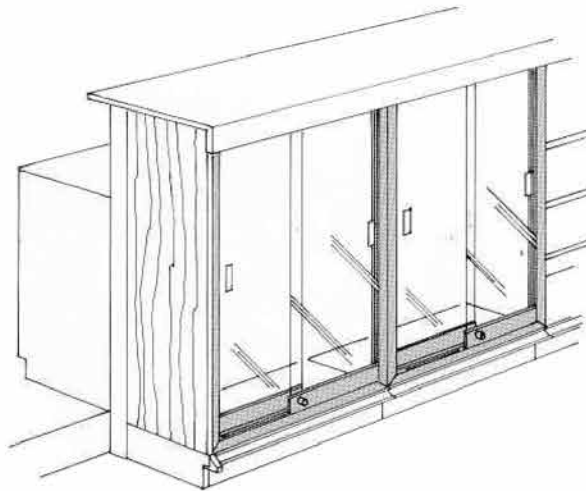
- For recommended unit heights, see Wall Sections, Shelves, End Panels and Countertops in the Maxi Line Catalog
 - Add 2½" (64 mm) to length when ordering Prescription Service Countertop
- Example: CTO20 – 1941/2" (5 m)**



Shown with optional shelving and door kit

NOTE!

For Fixture Height Sliding Door Kits, see Maxi Line Catalog.
For light inside door kit, minimum base shelf depth is 14" (356 mm).
See Light Kit page in the Lighting Catalog.

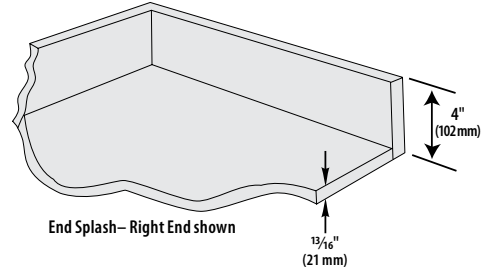


Prescription Work Countertop

- Solid wood construction, white leather laminate surface and edges
- Choice of 24" or 30" (610 mm or 762 mm) widths with 4" (102 mm) high backsplash
- Available in lengths up to 96" (2438 mm), longer tops are joined at job site by combination dowel and "Tite-Joint" combination, insuring a smooth surface
- If PWS-24 sink unit is used, countertop must be cut to fit at job site

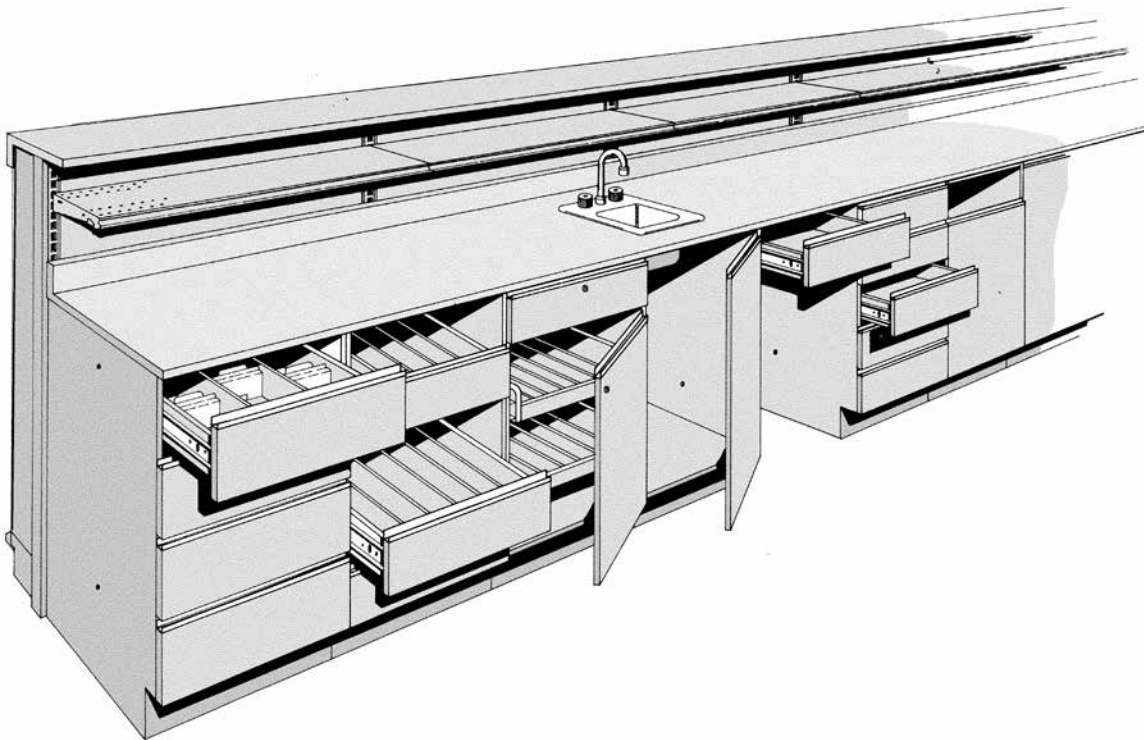
PWT(NW)-(NL)-(ESO)

- PWT Prescription Work Countertop
- NW Nominal Width 24" or 30" (610 mm or 762 mm)
- NL Nominal Length (See Ordering Supplement below)
- ESO End Splash Option
 ESR = Right End
 ESL = Left End
 ESB = Both Ends



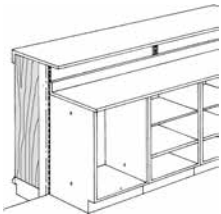
Finish Code

- LL White Leather (Standard)
- See Finishes Brochure for options

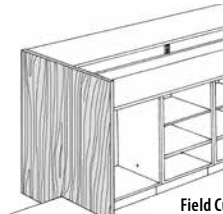


Ordering Supplement

- For ordering Prescription Work Countertops

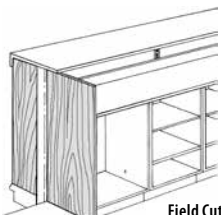


- Order PWT @ nominal length + 0" for each end this condition will exist



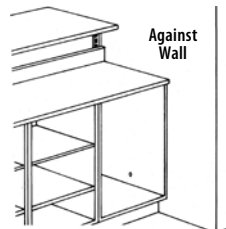
Field Cut Universal Panel

- Order PWT @ nominal length + 1 1/4" (32 mm) for each end this condition will exist
- Order Universal Panel @ nominal upright height plus 2" (51 mm) x PWT width plus base shelf depth plus 2" (51 mm)



Field Cut End Panel

- Order PWT @ nominal length + 0" for each end this condition will exist
- Order End Panel nominal upright height x 24" (610 mm) or 30" (762 mm)



Against Wall

- Order PWT @ nominal length + 1 1/4" (32 mm) for each end this condition will exist

Wood Work Counter Units

- Wood construction with easy-to-clean exteriors, Madix under-counter units afford the flexibility to custom design any pharmacy to meet all of your particular needs
- Precision construction with attention to detail assures accurate fixture alignment
- Finish on all units is Melamine Snow White (MSW); substitutions incur an upcharge
- Standard units are unfinished both sides
- All units are 24"W x 24"D x 38"H (610 mm x 610 mm x 965 mm)

NOTE!

All wood work counters come with standard hinge right doors.
To order hinge left doors, add suffix -DHL to end of part number.



Pharmacy Wood Four Drawer Card File Unit

- Four drawers
- Each drawer has three card followers, dividers and card levelers, field installed, to fit all sizes of index cards

PWD-424-CF

PWD Pharmacy Wood Drawer Unit
4 Four Drawer
24 Nominal Width 24" (610 mm)
CF Card File Unit



Pharmacy Wood Five Drawer Unit

- Five drawers with 6" (152 mm) vertical interior clearance

PWD-524

PWD Pharmacy Wood Drawer Unit
5 Five Drawers
24 Nominal Width 24" (610 mm)



Pharmacy Wood Bottle Unit

- Two 10° slant bottle drawers with four adjustable dividers
- One small bottom drawer

PWB-24

PWB Pharmacy Wood Bottle Unit
24 Nominal Width 24" (610 mm)



Pharmacy Wood Sink Unit

- Full height door conceals access to plumbing
- Includes stainless steel sink, installed in countertop at job site

PWS-24

PWS Pharmacy Wood Sink Unit
24 Nominal Width 24" (610 mm)

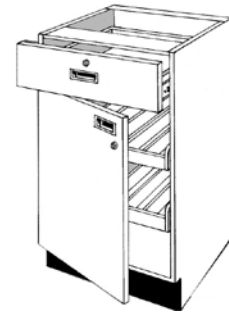


Pharmacy Wood Narcotics Unit

- Locking top drawer
- Two drop-front drawers behind locking door

PWN-24

PWN Pharmacy Wood Narcotics Unit
24 Nominal Width 24" (610 mm)

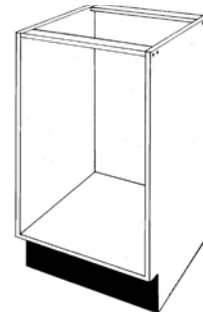


Pharmacy Wood Open Unit

- Basic open unit with shelf and door options available

PWA-24

PWA Pharmacy Wood Open Unit
24 Nominal Width 24" (610 mm)

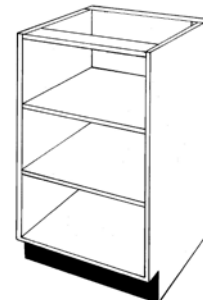


Pharmacy Wood Open Unit with Two Shelves

- Basic open unit with two adjustable interior shelves

PWA-224

PWA Pharmacy Wood Open Unit
2 Two Shelves
24 Nominal Width 24" (610 mm)

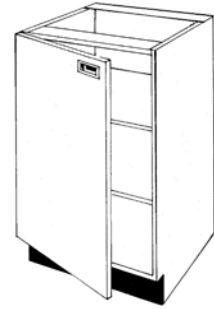


Pharmacy Wood Door Unit with Two Shelves

- Full height door with two adjustable interior shelves

PWA-224D

PWA Pharmacy Wood Unit
 2 Two Shelves
 24 Nominal Width 24" (610 mm)
 D Door

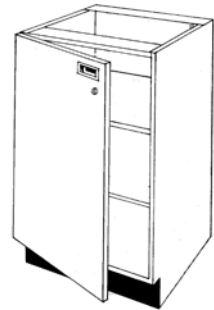


Pharmacy Wood Locking Door Unit with Two Shelves

- Full height locking door with two adjustable interior shelves

PWA-224DL

PWA Pharmacy Wood Unit
 2 Two Shelves
 24 Nominal Width 24" (610 mm)
 DL Locking Door

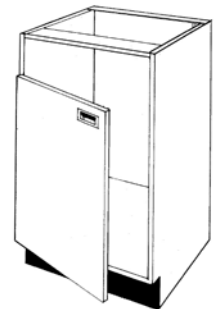


Pharmacy Wood Waste Unit

- Short door leaves opening at top for waste container access
- Waste container not included

PWW-24

PWW Pharmacy Wood Waste Unit
 24 Nominal Width 24" (610 mm)



Pharmacy Wood Open Unit with Drawer and One Shelf

- Basic open unit with single drawer plus one adjustable shelf

PWADR-124

PWADR Pharmacy Wood Open Drawer Unit
 1 One Shelf
 24 Nominal Width 24" (610 mm)



Pharmacy Wood Door Unit with Drawer and Two Shelves

- Short height door with two adjustable interior shelves

PWADR-224D

PWADR.... Pharmacy Wood Open Drawer Unit
 2.... Two Shelves
 24.... Nominal Width 24" (610 mm)
 D.... Door



Pharmacy Wood Locking Door Unit with Drawer and Two Shelves

- Full height locking door with two adjustable interior shelves

PWADR-224DL

PWADR.... Pharmacy Wood Open Drawer Unit
 2.... Two Shelves
 24.... Nominal Width 24" (610 mm)
 DL.... Locking Door

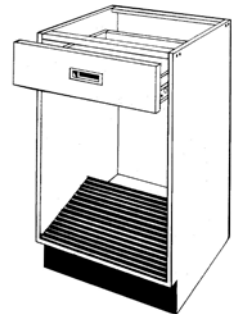


Pharmacy Wood CRT Unit

- Angled footrest is covered with durable hard-ribbed rubber
- Adjustable shelf not shown

PWCRT242438

PWCRT.... Pharmacy Wood CRT Unit
 24.... Nominal Width 24" (610 mm)
 24.... Nominal Depth 24" (610 mm)
 38.... Nominal Height 38" (965 mm)

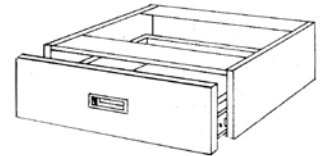


Pharmacy Wood Single Drawer

- Use as single drawer in a run of work unit with open space underneath
- Optional lock

PDU6-24

PDU.... Pharmacy Wood Single Drawer Unit
 6.... Nominal Drawer Height 6" (152 mm)
 24.... Nominal Width 24" (610 mm)

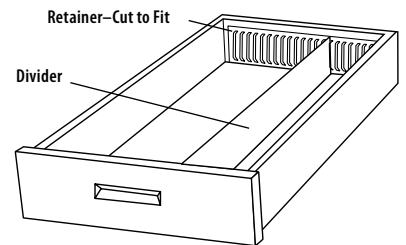


Drawer Divider Kit

- Five dividers with self-adhesive plastic banding strip
- Easy field installation

DU-DK

DU.... Drawer Unit
 DK.... Divider Kit



Wall Cabinet

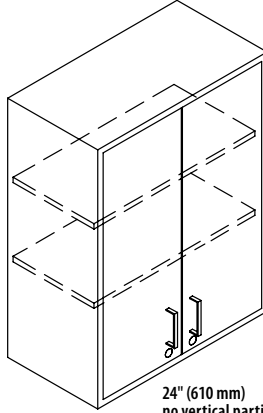
- 36" (914 mm) and 48" (1219 mm) cabinet comes with vertical partition
- Full height locking door with adjustable interior shelves
- Choice of laminate applied to all sides, except back
- Hardware pack included

WC1-12-(NW)-(30)-(OPT)

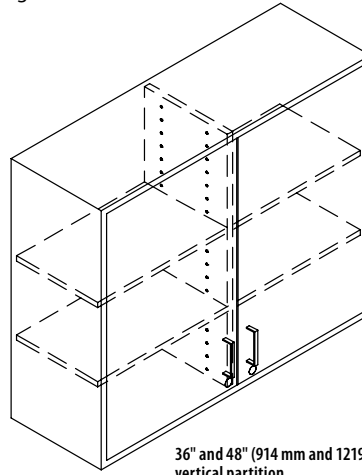
WC1 Wall Cabinet
 12 Nominal Depth 12" (305 mm)
 NW Nominal Width 24", 36" or 48"
 (610 mm, 914 mm or 1219 mm)
 30 Nominal Height 30" (762 mm)
 OPT Blank=No Locks
 LD=Locking Doors

Finish Code

FIN1 Laminate



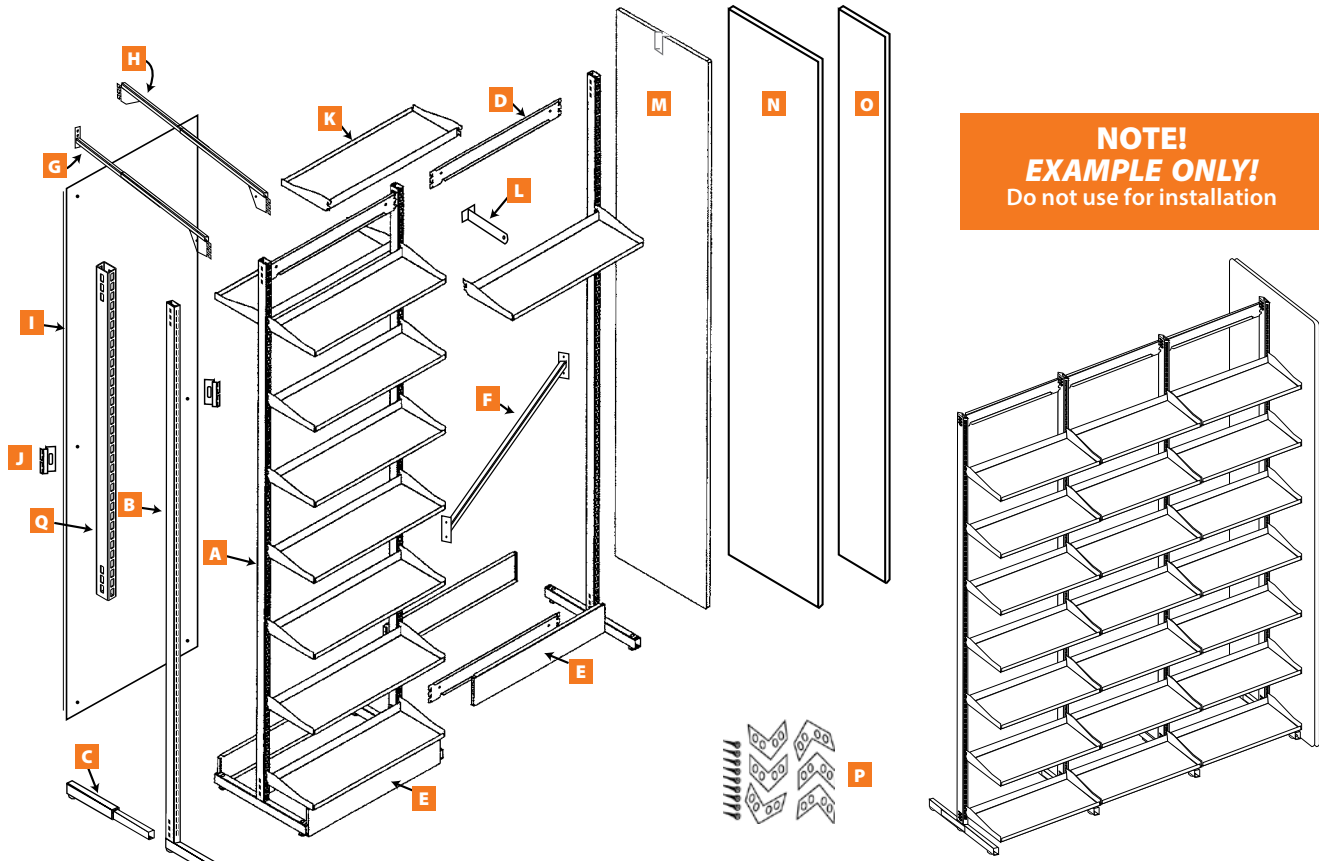
24" (610 mm)
no vertical partition



36" and 48" (914 mm and 1219 mm)
vertical partition

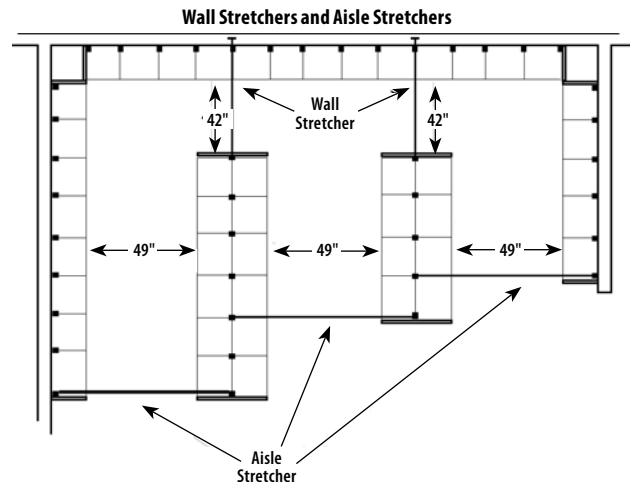
Tubular Pharmacy Shelving

- Incorporates many design features that accommodate today's prescription area, facilitating any floor plan layout requirements
- A wide range of accessories adapt to this system, making this pharmacy shelving versatile
- Tubular uprights for greater stability
- 16" (406 mm) centers that adapt to building standards
- 8", 10", 16" or 18" deep x 16" (203 mm, 254 mm, 406 mm or 457 mm x 406 mm) wide shelves with two positions (0° or 12° downtilt shelves)
- Lock together structural components
- Open or closed back design



NOTE!
EXAMPLE ONLY!
 Do not use for installation

Tubular Pharmacy Parts Identification	
Description	Part Number
A Tubular Pharmacy Gondola Upright	TRXUG(NH)
B Tubular Pharmacy Wall Upright	TRXUW(NH)(ND)
C Tubular Pharmacy Wall Upright Shoe Extension	TRXUWSE
D Tubular Pharmacy Bay Stretcher	TRXSTB(NW) or TRXSTB(NW)
E Tubular Pharmacy Kickplate	TRXK(NW) or TRXK(NW)
F Tubular Pharmacy Diagonal Stabilizer	TRXD(NW) or TRXD(NW)
G Tubular Pharmacy Wall Stretcher	TRXSTW3054
H Tubular Pharmacy Aisle Stretcher	TRXSTA3054
I Tubular Pharmacy Back	TRXB1684 or TRXB3284
J Tubular Pharmacy Back Clips	TRXBR-30PK
K Tubular Pharmacy Shelf	TRXSF1608 or TRXSF3208
L Tubular Pharmacy Shelf Divider	TRXSF08
M Tubular Pharmacy Double Bay Slotted End Panel	TRXEPS(NW)(NH)
N Tubular Pharmacy Double Bay End Panel	TRXEP(ND)(NH)
O Tubular Pharmacy Single Bay and Wall End Panel	TRXEP(ND)(NH)
P Tubular Pharmacy End Panel Hardware Kit for Building Corners	TRXEPHC
Q Tubular Pharmacy Upright Tube	TRXUT(NH)



A Tubular Pharmacy Gondola Upright

- Allows for merchandising on both sides of run
- Upright is constructed of 1" x 1½" (25 mm x 38 mm) tubular steel with slotting on both sides
- Shoes are welded to the upright
- Leveling legs included
- Standard finish: Snow White

TRXUG(NH)(NDND)

TRXUG Tubular Pharmacy Gondola Upright

NH Nominal Height 84" (2133 mm)

NDND Nominal Depth/Nominal Depth

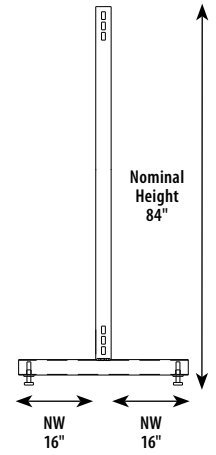
Blank=0808 08" 08" (203 mm 203 mm)

0812=08" 12" (203 mm 305 mm)

1212=12" 12" (305 mm 305 mm)

1616=16" 16" (406 mm 406 mm)

1818=18" 18" (457 mm 457 mm)



B Tubular Pharmacy Wall Upright

- Allows for merchandising on one side of run, but can be made into a Gondola Upright by adding the Wall Upright Shoe Extension
- Upright is constructed of 1" x 1½" (25 mm x 38 mm) tubular steel with slotting on both sides
- Shoes are welded to the upright
- Leveling legs included
- Standard finish: Snow White

TRXUW(NH)(ND)

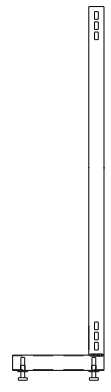
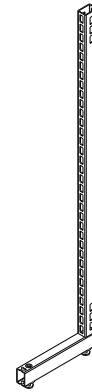
TRXUW Tubular Pharmacy Wall Upright

NH Nominal Height 48" to 84" in 6" increments

(1219 mm to 2133 mm in 152 mm increments)

ND Nominal Depth Blank=8", 12", 14", 16" or 18"

(203 mm, 305 mm, 356 mm, 406 mm or 457 mm)



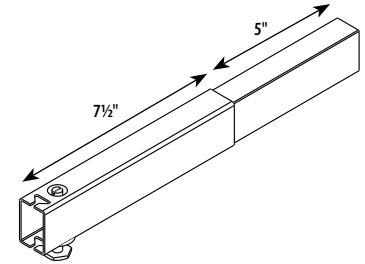
C Tubular Pharmacy Wall Upright Shoe Extension

- Adjustable to convert a Pharmacy Wall Upright into a Gondola Upright
- Available in one size only
- Standard finish: Snow White

TRXUWSE

TRXU Tubular Pharmacy Upright

WSE Wall Shoe Extension



D Tubular Pharmacy Bay Stretcher

- Used to attach one upright to another
- Use one Stretcher at top and bottom of each bay
- Standard finish: Snow White

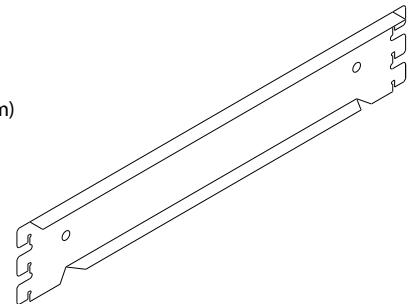
TRXSTB(NW)

TRXSTB Tubular Pharmacy Bay Stretcher

NW Nominal Width 14", 16", 24", 28", 30", 32", 36",

42" or 48" (356 mm, 406 mm, 610 mm, 711 mm,

762 mm, 813 mm, 914 mm, 1067 mm or 1219 mm)

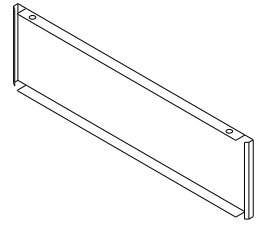


E Tubular Pharmacy Kickplate

- Used as bottom filler between floor and shelf
- Standard finish: Satin Black

TRXK(NW)

TRXK Tubular Pharmacy Kickplate
 NW Nominal Width 14", 16", 24", 28", 30", 32", 36",
 42" or 48" (356 mm, 406 mm, 610 mm, 711 mm,
 762 mm, 813 mm, 914 mm, 1067 mm or 1219 mm)

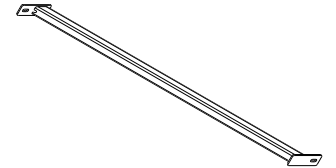


F Tubular Pharmacy Diagonal Stabilizer

- Adds stability to pharmacy unit when back panels are not being used
- Only one required per gondola run
- Standard finish: Snow White

TRXD(NW)

TRXD Tubular Pharmacy Diagonal Stabilizer
 NW Nominal Width 14", 16", 24", 28", 30", 32", 36",
 42" or 48" (356 mm, 406 mm, 610 mm, 711 mm,
 762 mm, 813 mm, 914 mm, 1067 mm or 1219 mm)

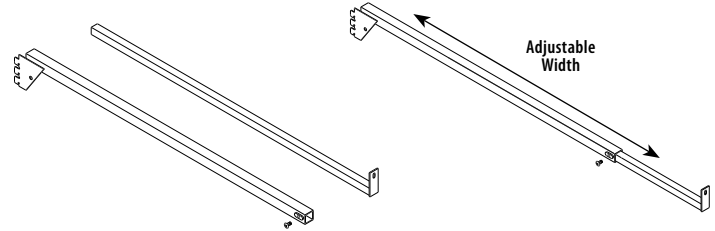


G Tubular Pharmacy Wall Stretcher

- Used to stabilize freestanding bays
- Stretcher should be hooked into upright and slotted end panels must be used
- Adjust from 30" to 54" (762 mm to 1372 mm)
- Standard finish: Snow White

TRXSTW3054

TRXSTW ... Tubular Pharmacy Wall Stretcher
 3054 Adjustable Width 30" to 54"
 (762 mm to 1372 mm)

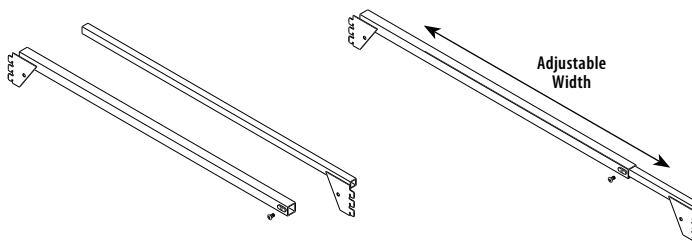


H Tubular Pharmacy Aisle Stretcher

- Used overhead to stabilize bays
- Tabs on Aisle Stretchers lock into uprights of opposite runs
- Standard finish: Snow White

TRXSTA(OPT)

TRXSTA Tubular Pharmacy Aisle Stretcher
 OPT 3054=Adjustable Width 30" to 54"
 (762 mm to 1371 mm)
 3062=Adjustable Width 30" to 62"
 (762 mm to 1575 mm)
 4078=Adjustable Width 40" to 78 "
 (1016 mm to 1981 mm)



I Tubular Pharmacy Back Panel

- Optional for both Wall and Gondola units
- 3/16" (5 mm) painted hardboard—same color on both sides
- Requires six Tubular Pharmacy Back Clips (TRXBR-30PK) clips per back
- Standard finish: Snow White

TRXBP(NW)(NH)

TRXBP Tubular Pharmacy Back Panel
 NW Nominal Width 16", 32" or 48"
 (406 mm, 813 mm or 1219 mm)
 NH Nominal Height 84" (2133 mm)



Tubular Pharmacy Back and Tubular Pharmacy Shelf shown

J Tubular Pharmacy Back Clips

- Six required for Tubular Pharmacy Back Panel [TRXBP(NW)(NH)]
- Clear plastic clips
- Packs of thirty (for five backs)

TRXBR-30PK

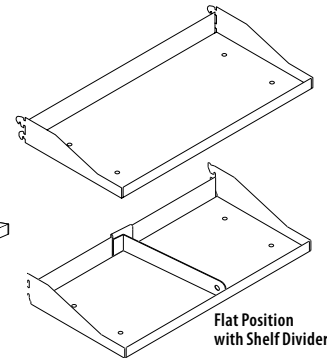
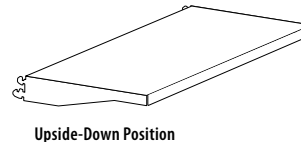
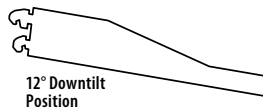
TRXBR Tubular Pharmacy Back Clips
 30PK Pack of 30

K Tubular Pharmacy Shelf

- Two-position shelf with integral brackets has 30 lb weight capacity
- Shelves may be installed flat, downtilt 12° or upside-down for a smooth display surface
- Optional Tubular Pharmacy Shelf Dividers [TRXSFD-(ND)] may be used, except in upside-down position
- Accepts Tubular Pharmacy Shelf Acrylic Front [TRXSFAF(NW)(NH)]
- Standard finish: Snow White

TRXSF(NW)(ND)

TRXSF Tubular Pharmacy Shelf
 NW Nominal Width 14", 16", 24", 28", 30", 32", 36", 42" or 48" (356 mm, 406 mm, 610 mm, 711 mm, 762 mm, 813 mm, 914 mm, 1067 mm or 1219 mm)
 ND Nominal Depth 08" to 18" in 2" increments (203 mm to 457 mm in 51 mm increments)



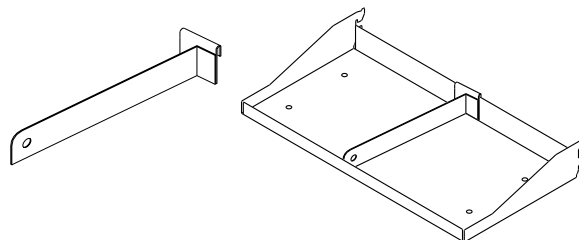
NOTE!
 Upside-down position only applies to 8", 10" and 12" ND.
 14", 16" and 18" ND does not use the upside-down position.

L Tubular Pharmacy Shelf Divider

- Used with the Tubular Pharmacy Shelf [TRXSF(NW)(ND)] to provide product organization
- Dividers cannot be used when shelf is installed in the upside-down position
- Standard finish: Snow White

TRXSFD-(ND)

TRXSFD Tubular Pharmacy Shelf Divider
 ND Nominal Depth 08" to 18" in 2" increments (203 mm to 457 mm in 51 mm increments)



M Tubular Pharmacy Shelf Acrylic Front

- Used with the Tubular Pharmacy Shelf [TRXSF(NW)(ND)] to provide product organization

TRXSFAF(NW)(NH)

TRXSFAF ... Tubular Pharmacy Shelf Acrylic Front
 NW Nominal Width 14", 16", 24", 28", 30", 32", 36", 42" or 48" (356 mm, 406 mm, 610 mm, 711 mm, 762 mm, 813 mm, 914 mm, 1067 mm or 1219 mm)
 NH Nominal Height 1.5", 2", 2.5", 3", 3.5" or 4"
 (38 mm, 51 mm, 64 mm, 76 mm, 90 mm or 102 mm)



N O Tubular Pharmacy End Panel

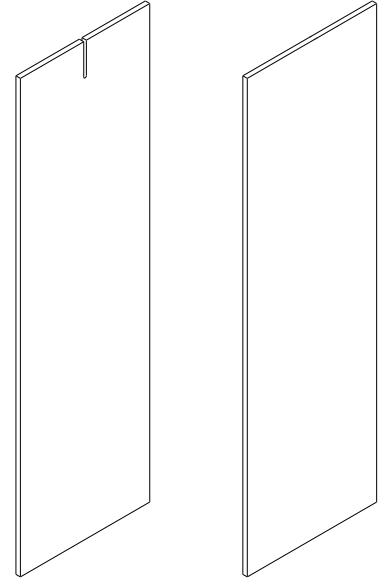
- Used as finished trim to close off ends of runs
- Slotted Pharmacy End Panel is used in conjunction with Pharmacy Wall Stretcher for attachment to upright
- Constructed of 5/8" (16 mm) particle board
- Can be ordered as Melamine or Laminate, with both sides and all edges in same finish

TRXEP(OPT)(ND)(NH)

TRXEP Tubular Pharmacy End Panel
 OPT S=Slot
 Blank=No Slot
 ND Nominal Depth
 10"=Wall (254 mm)
 18"=Gondola (457 mm)
 NH Nominal Height 84" (2133 mm)

Finish Code

MSW Melamine Snow White
 LSW Laminate Snow White



NOTE!
 Slot option used with Wall Stretcher, TRXSTW(NW).



Tubular Pharmacy Back, Shelf and End Panel shown

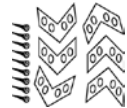
P Tubular Pharmacy End Panel Hardware Kit or Corners

- Used for building corners
- Order one hardware kit for each corner required

TRXEPHC

TRXEP Tubular Pharmacy End Panel
 HC Hardware Kit for Corners

Tubular Pharmacy End Panel Hardware Kit for Corners	
Contents	Qty
Braces, 2 Corner	6
Screw, 6 x 1 1/2" Nickel	24



Q Tubular Pharmacy Upright Tube

- May be anchored to wall, opening up more floor space
- Uprights may be installed without use of Tubular Pharmacy Bay Stretches, TRXSTB(NW), sold separately
- Bay Stretches determine spacing and allow for optimal anchoring that will not interfere with shelf placement
- Constructed of 1" x 1 1/2" (25 mm x 38 mm) tubing
- Standard finish: Snow White

TRXUT(NH)

TRXUT Tubular Pharmacy Upright Tube
 NH Nominal Height
 12" to 48" in 6" Increments
 (304 mm to 1219 mm in 152 mm Increments)

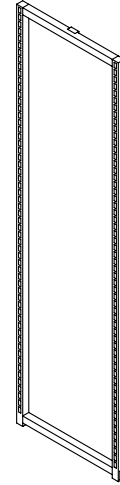


Tubular Pharmacy End Frame

- Used to increase storage at ends of Pharmacy Gondola runs
- Frame hooks over top and into legs of Pharmacy Gondola Upright
- Accepts all 16" (406 mm) wide Tubular Pharmacy accessories
- Load capacity is 800 inch-lbs evenly distributed
- Standard finish: Snow White

TRXEF8416

TRXEF Tubular Pharmacy End Frame
 84 Nominal Height 84" (2133 mm)
 16 Nominal Width 16" (406 mm)

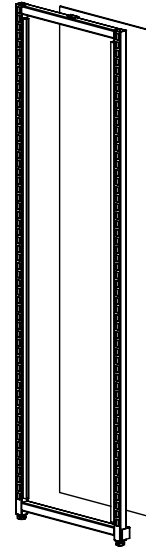


Tubular Pharmacy End Frame Modified with Track

- Used to increase storage at ends of Pharmacy Gondola runs
- Frame hooks over top and into legs of Pharmacy Gondola Upright
- Accepts all 16" (406 mm) wide Tubular Pharmacy accessories
- Load capacity is 800 inch-lbs evenly distributed
- Standard finish: Snow White
- Comes with a hardboard back

TRXEFM8416H

TRXEFM.... Tubular Pharmacy End Frame
 Modified with Track
 84 Nominal Height 84" (2133 mm)
 16 Nominal Depth 16" (406 mm)
 H Hardboard



Pharmacy Wire Grid Shelf

- Designed for use as prescription-ready rack within Tubular Pharmacy System
- Available in widths of 16", 32", or 48"x 6" deep (406 mm, 813 mm, or 1219 mm x 152 mm deep) , 2" (51 mm) front lip and 5" (127 mm) back height
- Load capacity 30 lbs (14 kg)
- Hooks into upright slots with welded-on clips; no additional brackets needed
- Sold in packs of 25
- Standard finishes: Powder Chrome and Snow White

RXWGS-(NW)

RXWGS Pharmacy Wire Grid Shelf
NW Nominal Width 16", 32", 48"
(406 mm, 813 mm, 1219 mm)

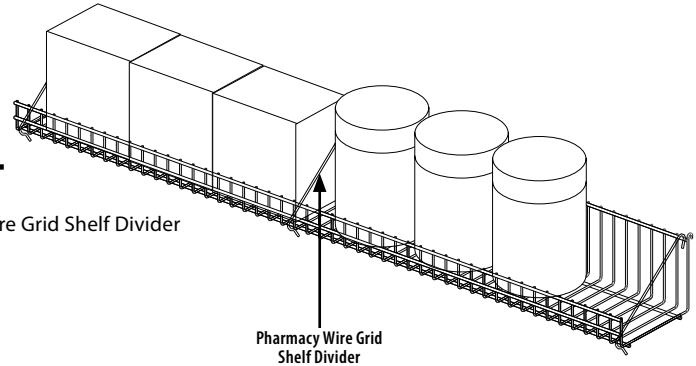


Pharmacy Wire Grid Shelf Divider

- Sold in packs of 25

PWGSD-25PK

PWGSD Pharmacy Wire Grid Shelf Divider
25PK 25 Pack



Tubular Pharmacy Base Shelf

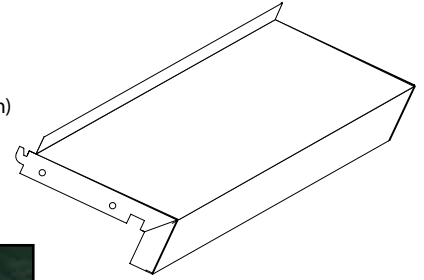
- Replaces standard shelf and kickplate for a cleaner look
- Reduces number of parts
- 32" (8913 mm) and 48" (1219 mm) can be used on 16" (406 mm) center uprights
- Standard finish: Snow White

TRXBS(NW)(ND)

TRXBS Tubular Pharmacy Base Shelf

NW Nominal Width 16", 24", 28", 30", 32", 36",
42" or 48" (406 mm, 610 mm, 711 mm,
762 mm, 813 mm, 914 mm, 1067 mm or 1219 mm)

ND Nominal Depth 08" or 10" (203 mm or 254 mm)



Tubular Pharmacy Base Shelf End Cover, Wall Version

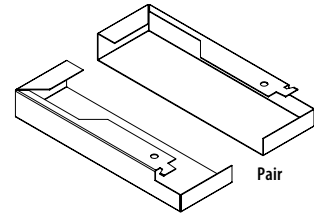
- Finishes off ends of pharmacy units
- Consists of a left-hand and right-hand pair
- Standard finish: Satin Black

TRXECBS(ND)

TRX Tubular Pharmacy

ECBS Base Shelf End Cover, Wall Version

ND Nominal Depth 08", 12", 16" or 18"
(203 mm, 305 mm, 406 mm or 457 mm)



Tubular Pharmacy Base Shelf End Cover, Gondola Version

- Finishes off ends of pharmacy units
- Consists of one unit
- Standard finish: Satin Black

TRXECBS(LH)(RH)

TRX Tubular Pharmacy

ECBS Base Shelf End Cover, Gondola Version

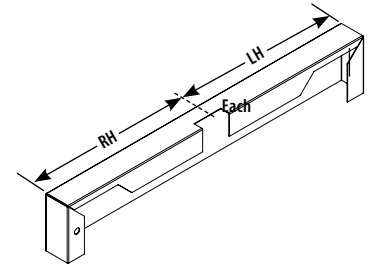
LHRH Left-Hand Right-Hand

0808=08" (203 mm)

1212=12" (305mm)

1616=16" (406 mm)

1818=18" (457 mm)



Tubular Pharmacy Will Call Bar

- Hangs in standard pharmacy uprights
- Projects 5" (127 mm), 6" (152 mm) or 8" (203 mm) from face of uprights
- Will call bags and clips not included

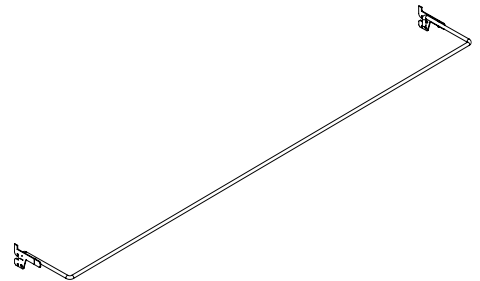
TRXWCB(NW)(ND)

TRX Tubular Pharmacy

WCB Will Call Bar

NW Nominal Width 16", 32" or 48"
(406 mm, 813 mm or 219 mm)

ND Nominal Depth 5", 6" or 8"
(127 mm, 152 mm or 203 mm)

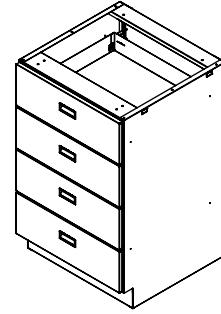


Pharmacy Metal Cabinet with Four Drawers

- Four drawer unit
- Locking top drawer (only) available
- 24"W x 38"H x 23"D
(610 mm x 965 mm x 584 mm)

MCBRX4DR-(OPT1)(OPT2)

- MCB Metal Cabinet Base
- RX Pharmacy
- 4DR Four Drawer
- OPT1 MT=Metal Top
Blank=No Top
- OPT2 L=Locking Top Drawer
Blank=No Lock

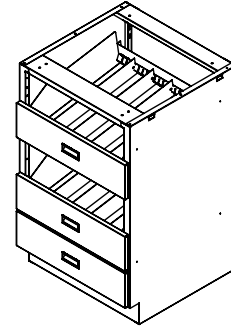


Pharmacy Metal Cabinet Bottle Unit

- Three drawer Bottle Unit
- Top two bottle drawers include divider system
- Standard Flat Bottom Drawer (no dividers)
- 24"W x 38"H x 23"D
(610 mm x 965 mm x 584 mm)

MCBRXB

- MCB Metal Cabinet Base
- RX Pharmacy
- B Bottle Unit

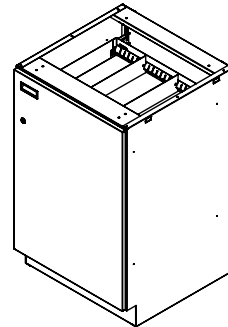


Pharmacy Metal Cabinet Narcotics Unit

- Three drawers behind locking door
- Includes Drawer Divider System
- 24"W x 38"H x 23"D
(610 mm x 965 mm x 584 mm)

MCBRXN(OPT)

- MCB Metal Cabinet Base
- RX Pharmacy
- N Narcotics
- OPT DHL=Door Hinged Left
Blank=Door Hinged Right

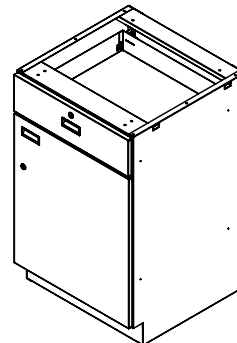


Pharmacy Metal Cabinet Single Door, Single Drawer Unit

- Locking half door and drawer
- Full extensions drawer slides
- 24"W x 38"H x 23"D
(610 mm x 965 mm x 584 mm)

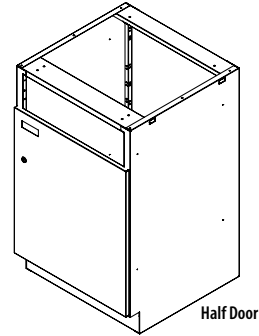
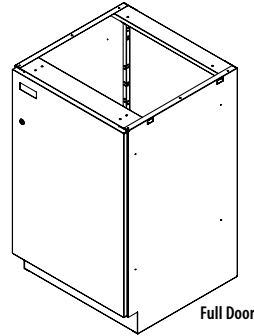
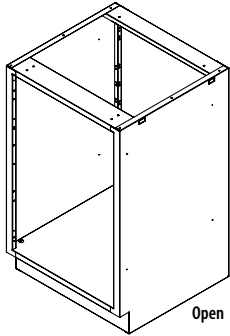
MCBRXO(OPT1)(OPT2)1D

- MCB Metal Cabinet Base
- RX Pharmacy
- O Open Unit
- OPT1 1DR=One Door
Blank=No Door
- OPT2 DHL=Door Hinged Left
Blank=Standard Door Hinged Right
- 1D One Drawer



Pharmacy Metal Cabinet Open Unit

- Basic Open Unit with shelf capability and full door or half door options
- 24"W x 38"H x 23"D
(610 mm x 965 mm x 584 mm)



MCBRX(OPT1)(OPT2)

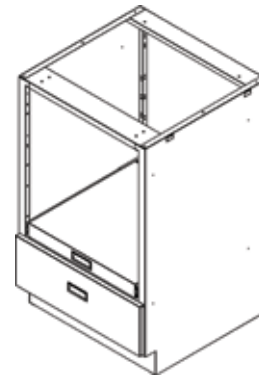
- MCB Metal Cabinet Base
- RX Pharmacy
- O Open Unit
- OPT1 Blank=No Door
FD=Full Door with Lock
HD=Half Door with Lock and 6" Open
Void Above Door
- OPT2 Blank=Standard Door Hinged Right
DHL=Door Hinged Left

Pharmacy Metal Cabinet Open Unit with Printer Shelf and Bottom Drawer

- Pullout shelf measures 20"W x 20"D
(508 mm x 508 mm)
- Full extension drawer slides
- 24"W x 38"H x 23"D
(610 mm x 965 mm x 584 mm)

MCBRXOBDPPS

- MCB Metal Cabinet Base
- RX Pharmacy
- O Open Unit
- BD Bottom Drawer
- PPS Pullout Printer Shelf

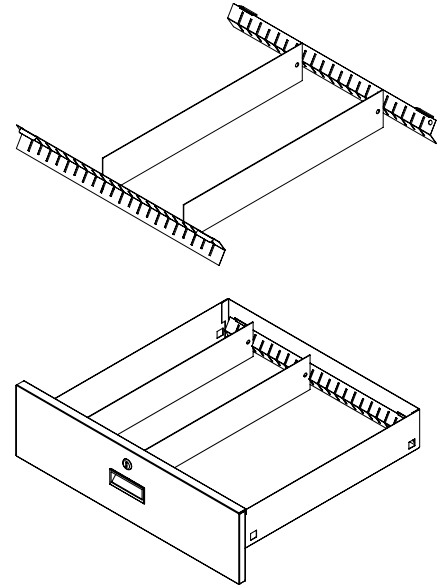


Pharmacy Metal Cabinet Drawer Divider System

- Divider System may be added to any Pharmacy Metal Cabinet Base unit with drawers
- Two dividers and two divider holders per order (drawer not included)

MCBRXDDIVS

MCB Metal Cabinet Base
RX ... Pharmacy
DDIVS Drawer Divider System

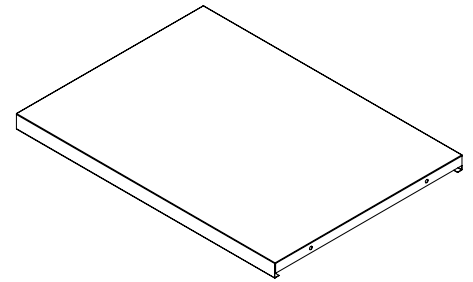


Pharmacy Metal Cabinet Adjustable Shelf

- Can be added to units that have space for shelf

MCB-ADJSHF-2423

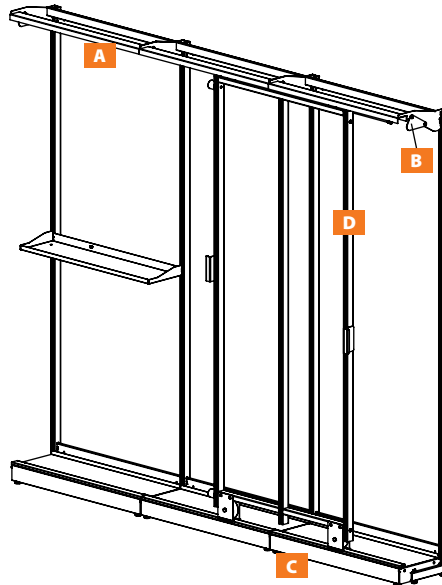
MCB Metal Cabinet Base
ADJSHF Adjustable Shelf
24 Nominal Width 24" (609 mm)
23 Nominal Depth 23" (584 mm)



Rolling Pharmacy Unit

Allows maximum usage of floor space, increasing storage capacity from 60-90% on wall sections

- Mounts to standard tubular pharmacy system
- Uses standard tubular pharmacy 16" (406 mm) or 32" (813 mm) wide shelves
- Cushioning piston provides controlled stop
- Easy to install

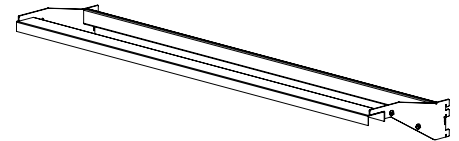


A Pharmacy Rolling Frame Top Channel

- Mounts in standard pharmacy uprights

TRXRTC08(NW)

TRXRTC Tube Line Pharmacy Rolling Frame Top Channel
 08 Nominal Depth 8" (203 mm)
 NW Nominal Width 32" or 48" (813 mm or 1219 mm)

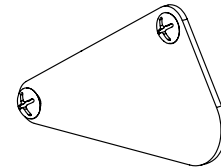


B Pharmacy Rolling Frame Stop

- Used only when ordering cushioning cylinder

TRXRFS

TRXRFS Tube Line Pharmacy Rolling Frame Stop

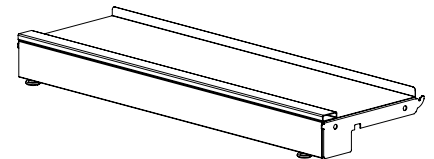


C Pharmacy Rolling Frame Base Deck

- Replaces Standard Base Shelf

TRXRBD08(NW)

TRXRBD Tube Line Pharmacy Rolling Base Deck
 08 Nominal Depth 8" (203 mm)
 NW Nominal Width 32" or 48" (813 mm or 1219 mm)

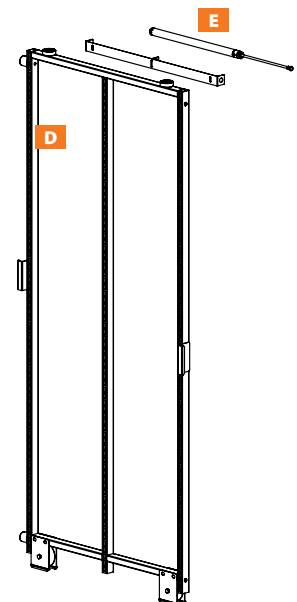


D Pharmacy Rolling Frame

- Rolls smoothly and requires little effort

TRX3RF32(NH)

TRX3RF Tube Line Pharmacy Rolling Frame
 32 Nominal Width 32" (813 mm)
 NH Nominal Height 78", 84", 90" or 96" (1981 mm, 2134 mm, 2286 mm or 1219 mm)



E Pharmacy Rolling Frame Cylinder Shelf

- Provides a controlled stop that prevents product from being displaced

TRX3RCS32(OPT)C

TRX3R Tube Line Pharmacy Rolling Frame
 CS Cylinder Shelf
 32 Nominal Width 32" (813 mm)
 C Cylinder

Back-to-Back Rolling Pharmacy Unit

- Up to 70% more floor space
- Mounts to standard tubular pharmacy system
- Uses standard tubular pharmacy 16" (406 mm) or 32" (813 mm) wide shelves
- Cushioning piston provides controlled stop
- Easy to install



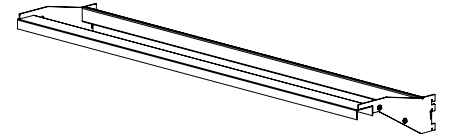
Back-to-Back Rolling Pharmacy Unit per Section				
Description	Part Number	Qty	Note	
A Pharmacy Rolling Frame Top Channel	TRXRTC08(NW)	2		
B Pharmacy Rolling Frame Stop	TRXRFS	2	per side	
C Pharmacy Rolling Frame Base Deck	TRXRBD08(NW)	2		
D Pharmacy Rolling Frame	TRX3RF32(NH)	1		
E Pharmacy Rolling Frame Cylinder Shelf	TRX3RCS32(OPT)	2	optional	

A Pharmacy Rolling Frame Top Channel

- Mounts in standard pharmacy uprights

TRXRTC08(NW)

TRXRTC Tube Line Pharmacy Rolling Frame Top Channel
 08 Nominal Depth 8" (203 mm)
 NW Nominal Width 32" or 48" (813 mm or 1219 mm)

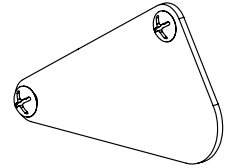


B Pharmacy Rolling Frame Stop

- Two required per side

TRXRFS

TRXRFS Tube Line Pharmacy Rolling Frame Stop

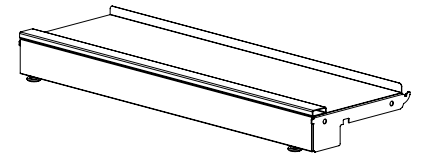


C Pharmacy Rolling Frame Base Deck

- Replaces Standard Base Shelf

TRXRBD08(NW)

TRXRBD Tube Line Pharmacy Rolling Base Deck
 08 Nominal Depth 8" (203 mm)
 NW Nominal Width 32" or 48" (813 mm or 1219 mm)

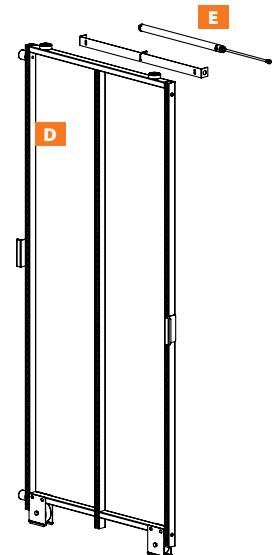


D Pharmacy Rolling Frame

- Rolls smoothly and requires little effort

TRX3RF32(NH)

TRX3RF Tube Line Pharmacy Rolling Frame
 32 Nominal Width 32" (813 mm)
 NH Nominal Height 78", 84", 90" or 96" (1981 mm, 2134 mm, 2286 mm or 1219 mm)



E Pharmacy Rolling Frame Cylinder Shelf

- Provides a controlled stop that prevents product from being displaced

TRX3RCS32C

TRX3R Tube Line Pharmacy Rolling Frame
 CS Cylinder Shelf
 32 Nominal Width 32" (813 mm)
 OPT Blank=No Cylinder
 C Cylinder

Pharmacy Security Cabinet

- Uses standard Tubular Pharmacy Shelves [TRXSF(NW)(ND)] 16" or 32" (406 mm or 813 mm) wide and 8" (203 mm) deep
- Stand-alone unit designed to be installed against a wall to prevent rear access
- Locking unit for 48" width x 84" (2134 mm) high for standard height Pharmacy Tubular Shelving [TRXSF(NW)(ND)]
- Knock-down design and easy installation
- Available in Grid Front or Plexi Front
- Can be used on a Wall Section and must be attached to the physical wall to avoid access from the rear

TRXSC4884(DOOR)-OL

- TRX Tube Line Pharmacy
- SC Security Cabinet
- 48 Nominal Width 48" (1219 mm)
- 84 Nominal Height 84" (2134 mm)
- DOOR WD=Wire Door
PD=Plexiglass Door
- OL Rim Latch Lock



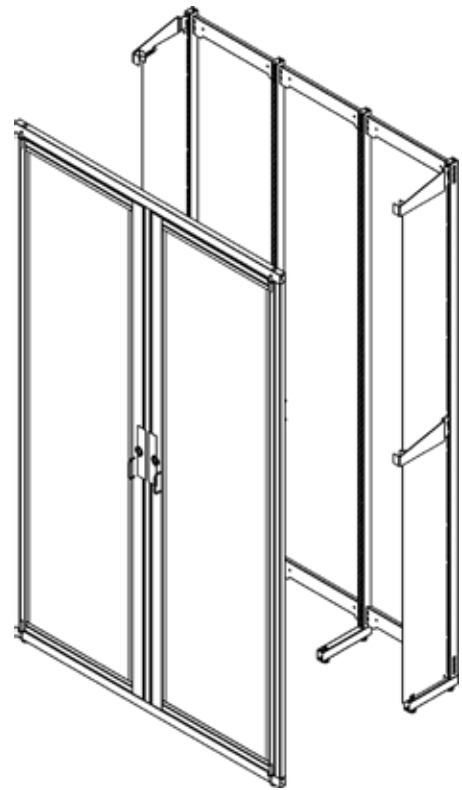
Shown with Plexiglass Doors

Pharmacy Door Kit

- Uses standard Tubular Pharmacy Shelves [TRXSF(NW)(ND)] 16" or 32" (406 mm or 813 mm) wide and 8" deep
- Mounts on standard pharmacy sections (not included, order separately)
- Available in Wire Grid Front or Plexi Front
- Designed to be against an exterior wall to limit access, but can be mounted to island sections with hardboard backs

TRXDK4884(DOOR)-OL

- TRX Tube Line Pharmacy
- DK Door Kit
- 48 Nominal Width 48" (1219 mm)
- 84 Nominal Height 84" (2134 mm)
- DOOR WD=Wire Door
PD=Plexiglass Door
- OL Rim Latch Lock



Prices All prices are subject to change without notice. Every effort will be made to give advance notice of any increase through notification from the home office. The customer will receive an acknowledgement showing prevailing prices at the time the order is processed. State or other sales or use taxes, freight and surcharges will be charged when applicable. Freight quotes may be provided based upon information available at time of quote, but are not guaranteed. Active freight charges will be billed if applicable. When market conditions dictate, a surcharge may be implemented. All quotations automatically expire at the end of 30 days.

Terms Cash in advance prior to production or net 30 days if open account status is approved by Madix Credit Department. MasterCard, Visa, and American Express are accepted.

Acceptance All orders, contracts, and agreements are subject to Madix's acceptance and approval. Madix shall not be liable for any delay in the performance of any order, contract, in the delivery of any goods, or for any damages resulting from such delay, when such delay is directly or indirectly caused by or due to fire, flood, accident, riot, act of God, war, governmental decree or order, strike, labor difficulties, shortage of labor, fuel, power, material or supplies, transportation delay or any other delay or causes (whether or not similar to any of those herein before specified) beyond our reasonable control. Order acceptance will be per the conditions and terms outlined in Madix's acknowledgement. Mailing of the acknowledgement will signify Madix's acceptance of the order.

Minimum Charge Orders are subject to a minimum charge of \$50.00 net (merchandise only) per shipping destination.

Changes and Cancellations Customer requested changes and cancellations are subject to approval by Madix. Every reasonable effort will be made to accommodate these requests without additional cost to the customer. Any manufacturing or engineering costs incurred will be charged to the customer. Orders produced and delayed for more than one week may incur charges for demurrage, unloading, or other storage costs. Madix will advise customers of the estimated charges at the time changes or cancellations are made.

Shipments Method and route of shipment are at Madix's discretion unless Madix is furnished with complete shipping instructions at least ten (10) days before the scheduled shipping date. Freight is FOB/EXW Madix shipping point.

Freight Claims For common carrier shipments, claims must be made directly with the carrier by the recipient. Listed are the types of losses which may occur, and your responsibility in handling them:

Loss of Freight: It is the receiver's responsibility to count the freight at the time of delivery. Any exception must be noted on the carrier's delivery receipt at time of delivery.

Damage of Freight: As with a loss of freight, damage of freight must be noted on the carrier's delivery receipt at the time of delivery. It is the receiver's responsibility to make sure that the freight is inspected for visible damage and that the number of pieces damaged is marked on the carrier's delivery receipt. Failure to note visible damage at the time of delivery will result in non-payment of a damage freight claim. Salvage must be held for the carrier.

Concealed Damage: If goods are received in apparently good condition but there is concealed damage, it is the customer's responsibility to contact your Madix Service Representative within 15 calendar days from delivery. Customer must keep the product and the packaging so that an inspection may be conducted by the carrier. Failure to handle a concealed damage claim in this manner could greatly reduce the amount recovered from the carrier.

Returned Goods Returned Goods requests must be submitted to Madix, Inc. within 60 days after receipt of product. Authorization must be in writing on Madix's RGA (Return Goods Authorization) form. Goods must be received within 30 days of RGA issue date for credit. Customer is responsible for delivery of authorized returns to Madix designated location in condition originally received. Only Code A products finished in returnable colors as indicated on the finish policy pages will be considered for return, and only items in unused, in resalable condition, and in the original packaging. No special size, color, or specially manufactured parts or products are eligible for return unless sent to the customer as the result of an error by Madix. Only merchandise listed on the RGA will be accepted for conditional return. Credit will not be issued for that portion of merchandise that is not considered resalable. A handling and restocking charge of 25% of the invoice price will be charged for all approved returns. Submit requests to your Madix Sales Representative or Customer Service Department prior to returning any merchandise. All returns must be have the customer name and Madix RGA number prominently displayed on each package. Product to be shipped prepaid at customer's expense unless prior approval has been received from an authorized Madix Representative.

Warranty We warrant to the original purchaser that all products manufactured by Madix are free from defects in material and workmanship. This warranty is invalid if products or parts are modified or used in a manner other than the intended purpose. Our obligation under this warranty is limited to repairing or replacing of any part or parts which shall, within one (1) year after delivery to the original purchaser, be demonstrated to be defective under normal use and service. This warranty is in lieu of all other warranties, expressed or implied, and of all other obligations or liabilities of any kind on Madix's part, and no modification of this warranty shall be valid or binding unless in writing and signed by an officer of Madix, Inc.

Production Madix fixtures are manufactured utilizing the most current technology of highly automated systems with process control techniques. Skilled craftsmanship, combined with automatic presses, roll forming machines, multi-spot welders, conveyers, finishing equipment and thorough inspections produce store fixtures of the highest quality.

Upright Carefully engineered of heavy gauge, high quality steel components, the UPRIGHT is slotted one inch on center for maximum flexibility, shelf adjustability and use of available space. Standard heights range from 36" through 96" with built-in leveler. For the finishing touch at the end of the shelving run, the snap-on UPRIGHT END COVER is made of durable, scuff and impact resistant plastic or heavy gauge metal. The UPRIGHT CAP, made of high impact plastic, has provision for a sign holder.

Base Shoe The five inch low BASE SHOE features exclusive "I" beam design, engineered of projection welded high strength steel parts insuring maximum load capacity. Snaps securely into upright with leveler and electrical access allowing for quick error free installation. For the finished look, the one piece slip on BASE END COVER is made with a high impact plastic nose reinforcement to protect base shelf tag molding.

Spanners Snap-in support SPANNERS keep uprights at equal spacing and hold the back panels rigid. Each spanner has knockouts for electrical access and telescoping uprights.

Back Panels High density hardboard BACKS fit flush to the face of the upright. A wide variety of finishes include solid, pegboard, wood grain and fabric in a wide assortment of optional colors. Mirrors and open backs are also available.

Kickplate Fully floating feature of kickplate allows flush fit against uneven floors, snaps in and out without disturbing base shelf for easy cleaning. Convenient knockout accommodates electrical access.

Base and Upper Shelves Steel base shelves feature lock tabs to insure quick installation and precision alignment. A double row of 1/4" inch perforations on the front and rear edge makes any form for binning possible. Slim bracket, high tensile design with flat or 15 degree downslope upper shelf positions allow for maximum merchandise visibility. Integrally formed price tag molding accommodates 11/4" tag. Upper shelves available in 8", 10", 12", 14", 16", 20", 22", 24", 26", 28", and 30" depths. Base shelves available in 12", 14", 16", 18", 20", 22" 24", 26", 28" and 30" depths.

Shelf Loading The recommended load capacity for upper shelves is based on evenly distributed weight. Capacities are reduced by 35% when front half is loaded and reflect rated maximum load. Load capacities are shown in the General Information Section under Shelf Loading.

Baked Enamel, Powder Coat Finishes All metal parts are finished with a specially formulated high solids or powder which are electrostatically bonded in a unique multi-stage process, to insure the highest quality finish. Aerosol cans of Touch-up paint are available in Madix's standard and optional colors. FAA regulations prohibit the shipment of this product by air or in export containers by air or ocean to countries outside the United States.

Product Maintenance When necessary to clean Madix shelving, use a non-abrasive mild detergent and warm water, followed by thorough drying. The use of a cloth made of a soft white cotton material is strongly recommended. The use of cleaning products that contain abrasive, bleach, or strong solvents, such as ketones, ethers, etc. will result in damage to the finish. The damage is most severe when these harsh cleaning agents are used on colors which contain leafing aluminum pigment such as powder chrome, silver vein, and other "vein" type finishes. The aluminum in these coatings resides at the surface of the finish and is therefore susceptible to damage by the harsh cleaning agents. As an alternative to the mild detergent, cleaners with ingredients similar to those found in products such as 409, Fantastik, and Simple Green can be used. Caution! Cleaners having ingredients similar to those found in Ajax, Borax, Comet, etc. should be avoided as finish damage could result.

Codes In your planning stage, consult with local municipal engineers to determine what codes and restrictions will be applicable in the locations where the shelving will be used. Codes may include: state, local, fire, building, and health and safety codes. Seismic requirements may apply in some locations. For example, in most locations fire codes state that fixtures need to be at least 18 inches below the sprinklers.

Shelving Selection Take into consideration the load that is expected not only on each shelf but also on the unit as a whole. Take into account the upright capacity. Refer to the load capacity information that is in the Madix Standard Catalog. Madix shelves are rated using an evenly distributed load. Do not install shelves or accessories that extend beyond the depth of the Base Shelves. Consider making the Base Shelves and low height fixtures a contrasting color from the floor's color to prevent potential tripping hazards. Do not use Madix parts or accessories for any purpose other than originally intended by Madix.

Shelving Installation Initial installation or relocation of Madix shelving should be supervised by qualified personnel. Madix products should be installed according to Madix's specifications. Madix's installation sequence must be followed for assembly and leveling. An improperly installed store fixture has a poor appearance and may cause a dangerous condition. Be especially careful when leveling fixtures with offset loads in which one side of the fixture has a considerably heavier load than the other side. Dismantling and reassembling used Madix shelving can be dangerous if the installers who are doing the work leave out parts, use damaged parts, or do not reassemble the product by Madix's specifications. Do not alter, modify, or structurally change any shelving component. Do not move assembled shelving. Only parts and accessories that are produced and supplied by Madix are covered by the Madix warranty. Do not assemble Madix fixtures with parts from other manufacturers. Under no circumstances should you use damaged parts. When assembling Gondola/Wall Shelving, install Kickplates to protect the Base Shoes from floor cleaning equipment and to offset the possible bumping and misalignment of the shelving runs. Do not install shelves or accessories on the sides of wall sections or any section that is not supported by Base Shoes. Use caution when handling and transporting shelving parts. Be careful when cutting shrink wrap from pallets because the shelving parts can dislodge from the wrap and fall. Cut the wrap gradually from the top, only as much as you need to remove the product from the top. Two common hazards while installing store fixtures are: employees hurting themselves with improper types of box cutters and employees putting boxes on the floor and then tripping over them.

Anchoring and Floors Depending on code requirements and Madix's specifications, some products must be anchored to the walls and/or floors. Do not lean tall or heavy objects against unanchored shelving systems. Retailers must consider the type of floor upon which the shelving will be installed.

Impact Loading Impact during the loading and unloading of merchandise can create an adverse loading situation and may result in damage to or failure of the Madix shelving. Do not walk or climb on Madix shelving.

Overturning Overloading the top portion of the shelving, non-uniform loading, out-of-plumb installation, and impact can cause shelving to overturn. Improperly installed Madix shelving with offset loads can cause store fixtures to collapse. Carefully follow Madix's installation instructions in order to prevent shelving from overturning.

Additional Shelving Safety Pointers Product loading instructions are included with each Madix order. Retailers must make merchandisers aware of the product's load limitations and the dangers of overloading the shelving. Remove any merchandise or overstock before attempting to move Madix shelving. Periodically inspect your Madix shelving for damaged or loose parts. Make sure that shelves and accessories are properly seated in the slotting or perforations. Make sure that shelves and accessories are not overloaded. As merchandising changes, beware of creating offset loads on shelving runs that are not properly leveled. Look for leveling warning signs such as increased gaps between shelves or accessories that may indicate that the shelving runs need re-leveling. Damage to Madix shelving is dangerous. In some cases, the shelving should be unloaded immediately and repaired or replaced before returning to service. Re-level fixtures that you have bumped or moved. Incorporate safety into your merchandising strategy. When possible, merchandise the heavier products on the lower shelves. If the merchandise will not fit on the Madix shelves and there is a replenishment cycle, make sure that the cycle is a safe one. Make sure that merchandise and overstock are properly stacked and maintained so that items will not fall into the aisles. Assure that customers who handle merchandise or overstock will not push product from one side of the Madix fixture to the other side where people could be injured from falling merchandise. Safely secure overstock that is placed on Madix shelves overhead. Measure the difficulty that your employees have in retrieving overstock, and consider whether employees or customers could be injured if the product happens to fall from the shelving units. Teach employees and inform customers that Madix shelves should never be used as ladders to reach higher shelves. Ladders should be clearly marked for employees use only and should not be left unattended, or customers will try to remove stock on higher shelves by themselves. Notify customers to ask for assistance when they need product that is out of their reach.

**POSSESSION OF THIS CATALOG IS NOT AUTHORIZATION TO SELL MADIX PRODUCTS!
ALL FACTORY QUOTES ARE GOOD FOR 30 DAYS ONLY.**

Finish Policy for Metal Products

Standard Colors, Returnable– Code A Madix standard returnable colors for display shelving are Sahara, Blue Gray, Oyster, Snow White, and Satin Black. Madix standard returnable colors for wire products only are Powder Chrome and Silver Vein. All catalog items are priced in standard color.

No Charge Colors (Non-Returnable)– Code B Madix non-returnable colors offered at the standard price are Chocolate, Dove Gray, Dover White, Fashion Gray, Skyline Gray and Tru Gray. All catalog items are priced in standard color.

Optional Colors-Level I Finishes (Non-Returnable)– Code B Madix offers optional colors, also known as Grade I Finishes, at additional charge: Bright Orange, Hollyberry, Hunter Green, Mandarin, Neon Blue, Spectrum Blue, Spectrum Green, Spectrum Red and Valencia. Products painted with these colors are non-returnable.

Metal Components: \$350.00 line charge plus published per-piece charge. **Metal Back panels:** \$350.00 line charge plus published per-piece charge.

Special Colors– Code C Use line change charge plus per piece charge supplied by customer service. Special colors are non-returnable.

Pricing For Levels II To IV:

Level II: 1.6 x Optional Color Upcharge. **Example:** Optional upcharge for SUS is \$1.50; upcharge with Level II finish will be \$2.40.

Level III: 2.8 x Optional Color Upcharge. **Example:** Optional upcharge for SUS is \$1.50; upcharge with Level III finish will be \$4.20.

Level IV: 3.8 x Optional Color Upcharge. **Example:** Optional upcharge for SUS is \$1.50; upcharge with Level IV finish will be \$5.70.

Metal Components: \$500.00 line charge plus published per-piece charge. **Back panels:** \$350.00 line charge plus published per-piece charge.

Maintenance for Metal Products

Baked Enamel and Powder Coated Finishes All metal parts are finished with a specially formulated high solids or powder which are electrostatically bonded in a unique multi-stage process to insure the highest quality finish. Aerosol cans of touch-up paint are available in Madix's standard and optional colors. FAA regulations prohibit the shipment of this product by air or in export containers by air or ocean to countries outside the United States.

Product Maintenance When cleaning Madix shelving, use a non-abrasive mild detergent and warm water, followed by thorough drying. Using a soft white cotton cloth is strongly recommended. Cleaning products containing abrasives, bleach, or strong solvents will result in damage to the finish, especially when used on colors containing leafing aluminum pigment, such as powder chrome or vein-type finishes.

Finish Policy for Wood Products

High Pressure Laminate The terms "laminates" or "HPL" are commonly applied to this material which consists of multiple layers of paper infused with phenolic resin and topped by a finish paper coated with clear melamine resin, all totally bonded under high pressure and heat. The finished sheet has extremely high wear and impact resistance.

Customer Specified High Pressure Laminate Madix coding is based on Wilsonart availability. Laminates other than Wilsonart may require additional lead time.

- Customer specified laminates add \$100.00 per pattern, per order
- Additional charge will apply based on the laminate grade that is chosen

Laminates that are not from a laminate manufacturer's standard samples (metallics, heavy textures, wet looks, core edge, special prints) will require a special quote. Contact Customer Service for specific pricing on laminates not listed above.

Thermofused Panels Thermofused panels are ideal for non-wear surfaces and have substantial impact and wear characteristics compared to melamine panels previously available. The product is produced using hot press laminating polyester or melamine resin impregnated self-bonding paper to wood substrate. Performance specifications are available from the American Laminations Association. Madix does not recommend the use of Thermofused panels on horizontal or other wear surfaces.

Printed Mirror Hardboard Printed materials are primarily used for back panels, but appear as various other products. These materials are carefully cross matched to the corresponding laminates and Thermofused. Mylar mirror hardboard is used in the same applications and is also available in pegboard and grooved pegboard.

Finish Policy for Back Panels

Standard Colors, Returnable– Code A Madix standard returnable colors for display shelving back panels are Sahara, Oyster, and Snow White.

Optional Colors-Level I Finishes (Non-Returnable)– Code B Madix non-returnable back panel colors offered at the optional price are Chocolate, Dove Gray, Dover White, Fashion Gray, Satin Black, Skyline Gray, Blue Gray and Tru Gray. Set-up charge of \$350.00 applies.

Optional Colors-Level II Finishes (Non-Brilliant)– Code B Madix offers optional back panel colors also known as non-brilliant finishes at an additional charge. These colors include custom grays, off whites, tans, and beiges not listed in Madix's Finishes brochure. Products painted with these colors are non-returnable. Set-up charge of \$350.00 applies.

Optional Colors-Level III Finishes (Brilliant)– Code C Brilliant back panel finishes include Hunter Green, Neon Blue, Spectrum Blue, and Spectrum Green. Set-up charge of \$350.00 applies.

Optional Colors-Level IV Finishes (Reds and Yellows)– Code C Use line change charge plus per piece charge supplied by customer service. Special colors are non-returnable. Set-up charge of \$350.00 applies.

Pricing For Levels II To IV

Level II 1.2 x the difference between the Hardboard/Pegboard Optional Color pricing and the Hardboard/Pegboard Sahara pricing. **Example:** Optional upcharge for a BH-342 with a Level II finish would be calculated as follows: \$13.85 - \$12.45 = \$1.40 x 1.2 = \$1.68. The color upcharge for a BH-342 with a Level II finish is \$1.68. This upcharge amount will be added to the Optional Color price of a BH-342. The new price of a BH-342 using a Level II finish is \$15.53 (\$13.85 + \$1.68 = \$15.53).

Level III 1.4 x the difference between the Hardboard/Pegboard Optional Color pricing and the Hardboard/Pegboard Sahara pricing. **Example:** Optional upcharge for a BH-342 with a Level III finish would be calculated as follows: \$13.85 - \$12.45 = \$1.40 x 1.4 = \$1.96. The new color upcharge for a BH-342 with a Level III finish is \$1.96. This upcharge amount will be added to the Optional Color price of a BH-342. The new price of a BH-342 using a Level III finish is \$15.81 (\$13.85 + \$1.96 = \$15.81).

Level IV 1.8 x the difference between the Hardboard/Pegboard Optional Color pricing and the Hardboard/Pegboard Sahara pricing. **Example:** Optional upcharge for a BH-342 with a Level IV finish would be calculated as follows: \$13.85 - \$12.45 = \$1.40 x 1.8 = \$2.52. The color upcharge for a BH-342 with a Level IV finish is \$2.52. This upcharge amount will be added to the Optional Color price of a BH-342. The new price of a BH-342 using a Level IV finish is \$16.37 (\$13.85 + \$2.52 = \$16.37).

NOTE! See Finishes Brochure for color samples.

Part Name	Part Number	Page Number
B		
Back-to-Back Rolling Pharmacy Unit		22
D		
Drawer Divider Kit	DU-DK	8
P		
Pharmacy Door Kit	TRXDK4884(DOOR)-OL	23
Pharmacy Metal Cabinet Adjustable Shelf	MCB-ADJSHF-HDWR-24	20
Pharmacy Metal Cabinet Bottle Unit	MCBRXB	18
Pharmacy Metal Cabinet Drawer Divider System	MCBRXDDIVS	20
Pharmacy Metal Cabinet with Four Drawers	MCBRX4DR	18
Pharmacy Metal Cabinet Narcotics Unit	MCBRXN	18
Pharmacy Metal Cabinet Open Unit	MCBRXO(OPT1)(OPT2)	19
Pharmacy Metal Cabinet Open Unit, Printer Shelf & Bottom Drawer	MCBRXOBDPPS	19
Pharmacy Metal Cabinet Single Door, Single Drawer Unit	MCBRXO(OPT1)(OPT2)1D	18
Pharmacy Rolling Frame	TRX3RF32(NH)	21, 22
Pharmacy Rolling Frame Base Deck	TRXRBD08(NW)	21, 22
Pharmacy Rolling Frame Cylinder Shelf	TRX3RCS32(OPT)	21, 22
Pharmacy Rolling Frame Stop	TRXRFS	21, 22
Pharmacy Rolling Frame Top Channel	TRXRTO8(NW)	21, 22
Pharmacy Security Cabinet	TRXSC4884(DOOR)-OL	23
Pharmacy Wire Grid Shelf	RXWGS-(NW)	16
Pharmacy Wire Grid Shelf Divider	PWGSD-25PK	16
Pharmacy Wood Bottle Unit	PWB-24	5
Pharmacy Wood CRT Unit	PWCRT242438	8
Pharmacy Wood Door Unit, Drawer, Two Shelves	PWADR-224D	8
Pharmacy Wood Door Unit, Two Shelves	PWA-224D	7
Pharmacy Wood Five Drawer Unit	PWD-524	5
Pharmacy Wood Four Drawer Card File Unit	PWD-424-CF	5
Pharmacy Wood Locking Door Unit, Drawer, Two Shelves	PWADR-224DL	8
Pharmacy Wood Locking Door Unit, Two Shelves	PWA-224DL	7
Pharmacy Wood Narcotics Unit	PWN-24	6
Pharmacy Wood Open Unit	PWA-24	6
Pharmacy Wood Open Unit, Drawer and One Shelf	PWADR-124	7
Pharmacy Wood Open Unit, Two Shelves	PWA-224	6
Pharmacy Wood Single Drawer	PDU6-24	8
Pharmacy Wood Sink Unit	PWS-24	6
Pharmacy Wood Waste Unit	PWW-24	7
Prescription Service Counter		3
Prescription Work Countertop	PWT(NW)-(NL)-ESO	4
R		
Rolling Pharmacy Unit		21
T		
Tubular Pharmacy Aisle Stretcher	TRXSTA3054	12
Tubular Pharmacy Back Panel	TRXBP(NW)(NH)	13
Tubular Pharmacy Back Clips	TRXBR-30PK	13
Tubular Pharmacy Base Shelf	TRXBS(NW)(ND)	17
Tubular Pharmacy Base Shelf End Cover, Gondola Version	TRXECBS(LH)(RH)	17
Tubular Pharmacy Base Shelf End Cover, Wall Version	TRXECBS(NW)	17
Tubular Pharmacy Bay Stretcher	TRXSTB(NW)	11
Tubular Pharmacy Diagonal Stabilizer	TRXD(NW)	12
Tubular Pharmacy End Frame	TRXEF(NH)(NW)	15
Tubular Pharmacy End Frame Modified with Track	TRXEFM8416H	15
Tubular Pharmacy End Panel	TRXEP(OPT)(ND)(NH)	14
Tubular Pharmacy End Panel Hardware Kit for Corners	TRXEPHC	14
Tubular Pharmacy Gondola Upright	TRXUG(NH)	11
Tubular Pharmacy Kickplate	TRXK(NW)	12
Tubular Pharmacy Shelf	TRXSF(NW)(ND)	13
Tubular Pharmacy Shelf Divider	TRXSFD-(ND)	13
Tubular Pharmacy Shelf with Acrylic Front	TRXSFA(NW)(ND)	13
Tubular Pharmacy Shelving		10
Tubular Pharmacy Upright Tube	TRXUT(NH)	14
Tubular Pharmacy Wall Stretcher	TRXSTW3054	12
Tubular Pharmacy Wall Upright	TRXUW(NH)	11
Tubular Pharmacy Wall Upright Shoe Extension	TRXUWSE	11
Tubular Pharmacy Will Call Bar	TRXWCB-(NW)(ND)	17
W		
Wall Cabinet	WCI-12-(NW)-30-(OPT)	9





Innovation on Display Since 1956



www.madixinc.com

Texas 500 Airport Road, Terrell, TX 75160 | 1010 S. Bolton, Jacksonville, TX 75766
Alabama 20984 Alabama Hwy. 9, Goodwater, AL 35072 | 500 Madix Drive, Eclectic, AL 36024