



## ABOUT MADIX

For over sixty years, Madix has partnered with retailers and brands to deliver unique, high-quality solutions for merchandising and store design. We are the industry's leading provider of store fixtures, shelving, and accessories, with three manufacturing locations and worldwide warehousing capabilities to better serve clients both international and domestic.

At our core, Madix is a company about people, not numbers. We take pride in responding to our clients' needs on an individual and personalized basis, because we believe that a truly holistic solution is one tailored to a specific business. We'll take time to genuinely understand the challenges you face in your day-to-day store operations, helping you find an answer adapted to your purposes.



[www.madixinc.com/maxislice](http://www.madixinc.com/maxislice)

# MAXI SLICE

**BREAK UP GONDOLA RUNS WITH SPLIT SECTIONS**



**Texas** 500 Airport Road, Terrell, TX 75160 800.776.2349  
**Alabama** 20984 Alabama Hwy. 9, Goodwater, AL 35072 800.633.6282

© 2017 Madix, Inc. All Rights Reserved. Prices and specifications subject to change without notice.  
 Not responsible for errors or omissions in printing.



# MAXI SLICE

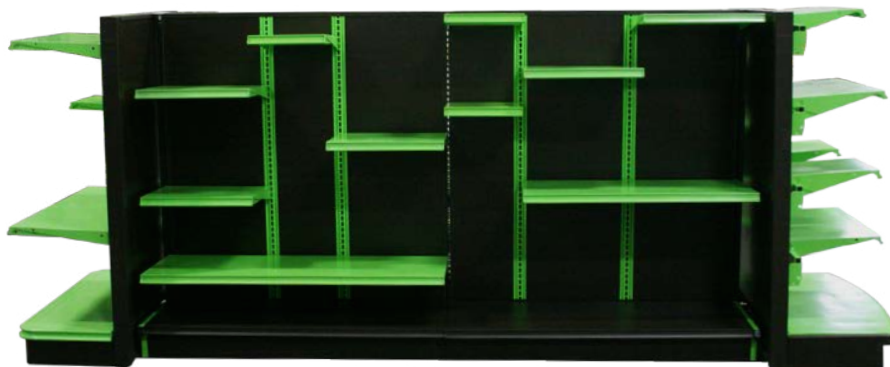
Maxi Slice's upright system provides creative merchandising opportunities by breaking up a common gondola run into more flexible sections. Make merchandise "pop" and cross-sell products by adding shelves and accessories in smaller segments. Slice gives retailers' the freedom to planogram shelves according to what is needed rather than being restricted to 3' and 4' (914 mm and 1219 mm) sections.

## Features

- Our unique system can be used on either one or both sides of a gondola
- Can be installed in existing Madix Maxi Line shelving
- Backs are available in peg, hardboard, and BWGH wire backs



*End Cap Configuration*



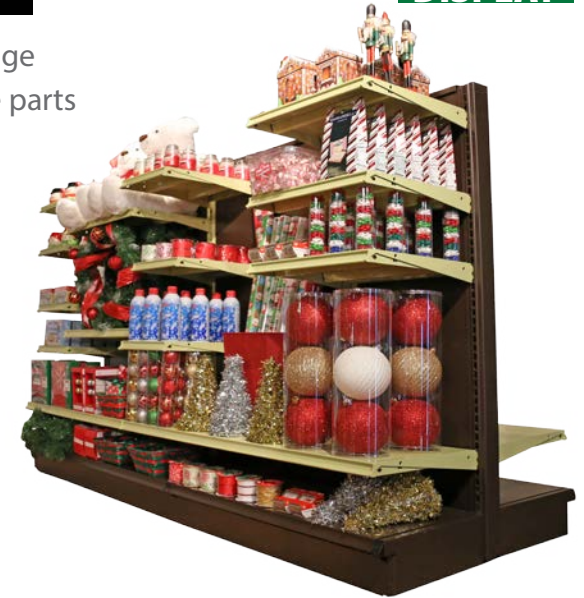
*Example Configuration*

## MAXI SLICE CONFIGURATIONS

- Easy to install and rearrange
- Only requires four unique parts

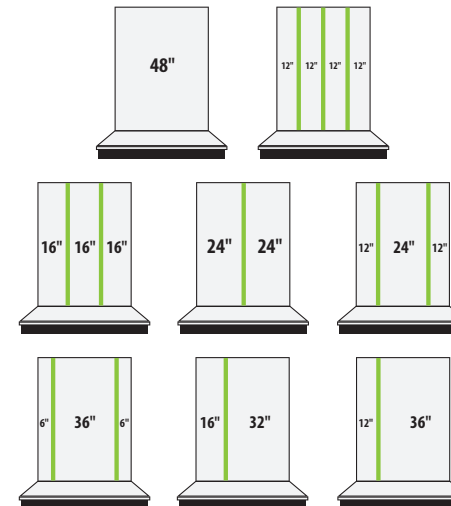


## DISPLAY



### 48" Wide Configurations

48" High to 96" High Backs  
Hardboard, Peg, and Wire Grid



### 36" Wide Configurations

48" High to 96" High Backs  
Hardboard, Peg, and Wire Grid

