

VERSA/LEDGE LIGHT ASSEMBLY INSTRUCTIONS FOR ULTA

INSTALLATION INSTRUCTIONS

5

Install the SHELF by sliding the brackets into the slots at an angle as shown. Then rotate downwards so that it is securely installed.

6

Attach LEDGE LIGHT provided by Madix to shelf by snapping it onto the bottom of the shelf with the magnets attached. LEDGE LIGHT should be towards the front of shelf so light shines on products.

7

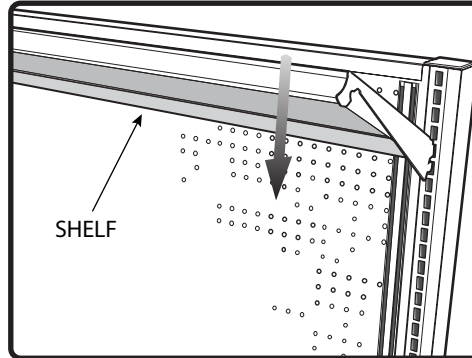
Install VERSA CONNECTOR by sliding under the back of the shelf until it attaches by the magnet. Make sure the prongs align and connect to the metal straps on the BUS BAR. Then connect the cord from the VERSA CONNECTOR to the LEDGE LIGHT.

8

Plug the power supply into an outlet. The lighting system should be complete. One power supply can power 10-48" lights or 13-36" lights. To adjust the shelf height, uninstall the shelf. Then lower or raise it to your desired location and repeat step 5 to reinstall the shelf.

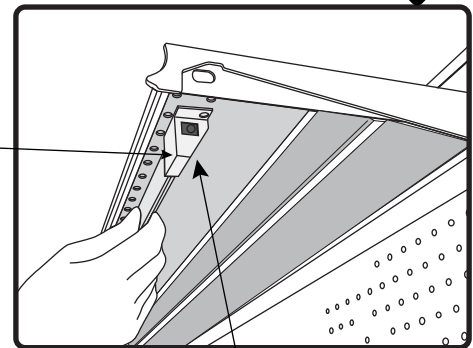
5

INSTALL SHELF



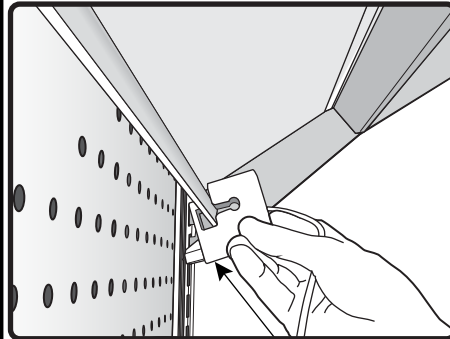
6

INSTALL LEDGE LIGHT



7

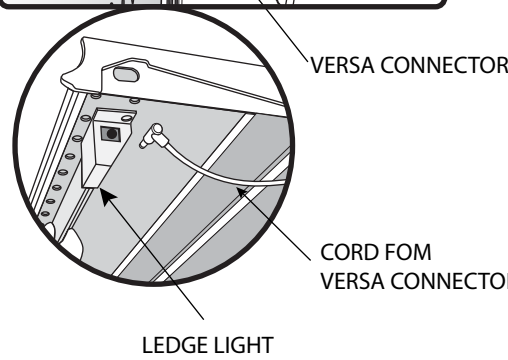
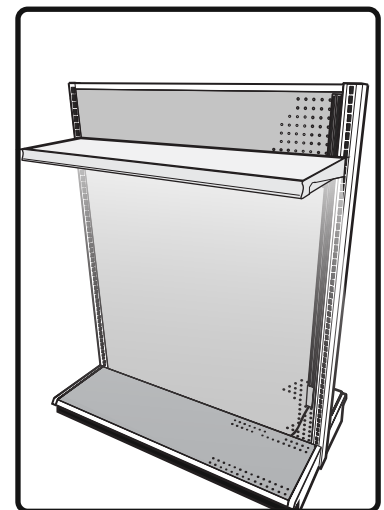
CONNECT LIGHT TO VERSA CONNECTOR



SLOPED EDGE TOWARD INTERIOR OF SHELF

8

FINISHED ASSEMBLY



P.O. BOX 729 / TERRELL, TEXAS 75160 / 972.563.5744 / 800.776.2349
P.O. BOX 177 / GOODWATER, ALABAMA 35072 / 205.839.6354 / 800.633.6282

REV: 00

REV#	ECN#	REVISION	BY	DATE