

ASY FOR INSIDE Y GONDOLA

1: ASSEMBLE UPRIGHTS, BASE SHOES, LOWER SPANNERS, AND CENTER SPANNERS. ALSO INSTALL (1) BACK PANEL INTO EACH "Y" GONDOLA SECTION. THIS WILL HELP TO KEEP THE RUNS STABLE. SEE STORE LAYOUT FOR LOCATIONS.

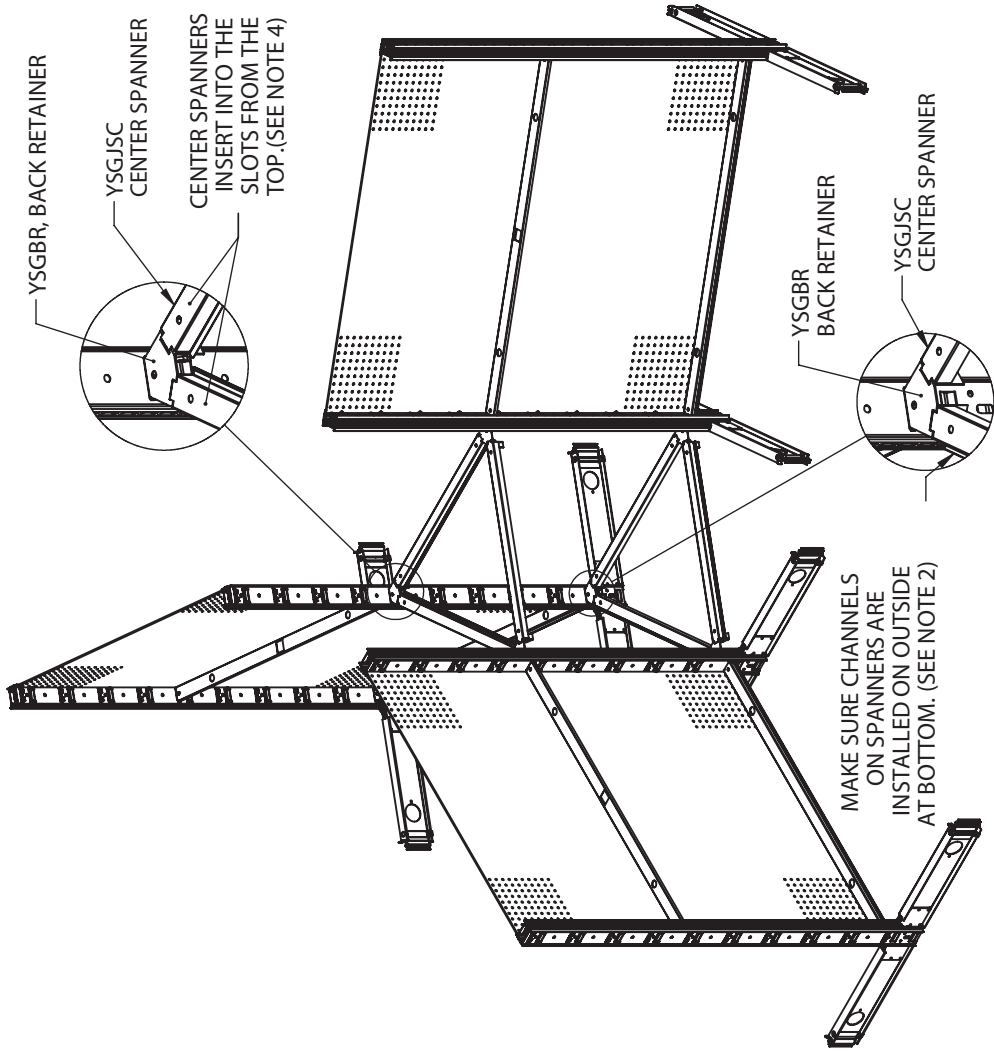
NOTE: REFERENCE ASY-046 FOR ASSEMBLY INSTRUCTIONS ON BASIC GONDOLA COMPONENTS.

2: INSERT (3) RETAINERS FLUSH WITH THE BOTTOM SPANNERS, AND THEN INSTALL (3) CENTER SPANNERS FROM THE TOP THROUGH THE SLOTS, MAKING SURE THAT THE TRACK FACES OUT SO THE BACKS WILL HAVE SOMETHING TO REST INTO.

3: AT "Y" JUNCTION INSERT THE BACK RETAINERS INTO THE UPRIGHTS AT THE SAME HEIGHT AS THE OTHER CENTER SPANNERS.

4: ONCE RETAINERS ARE IN POSITION, INSERT THE CENTER SPANNERS FROM THE TOP, THROUGH THE SLOTS OF THE RETAINERS, MAKE SURE THAT THESE SPANNERS HAVE THE TRACK FACING TOWARDS THE INSIDE OF THE JUNCTION. THIS WILL ALLOW THE BACKS TO BYPASS THE SPANNERS.

CRITICAL NOTE - READ THIS BEFORE INSTALLING ANY PARTS: CORNER SHELVES, BOTH BASE AND UPPER, WILL NEED TO BE INSTALLED FIRST TO INSURE THAT THERE IS ROOM INSIDE UPRIGHTS FOR ALL SHELVING



DATE

DESCRIPTION

REV.

madix
Asy-80015871
 P.O. BOX 729 FERRELL, TEXAS 75160
 214-515-5607/800-776-2349
 PAGE 1 OF 4
 REV. 02
 01/08/09 CAB
 ECM # 500000011726

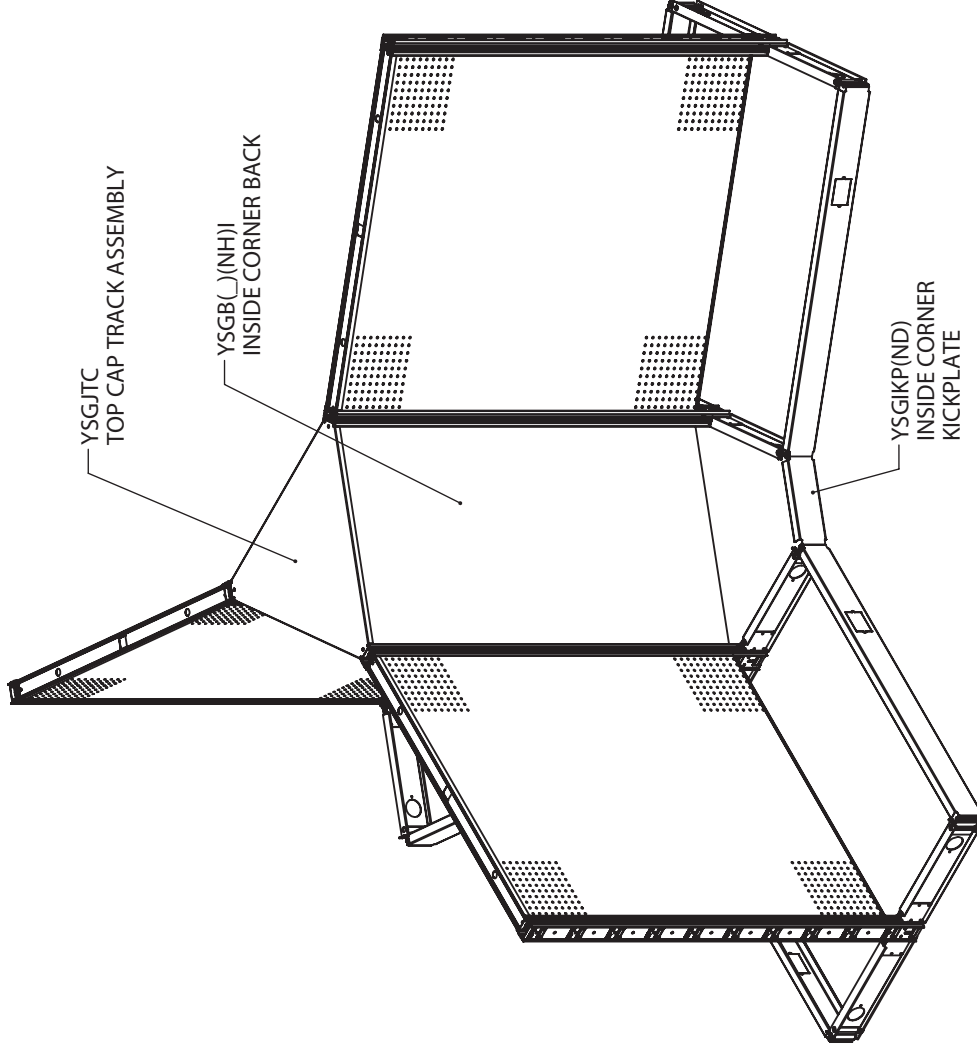
ASY FOR INSIDE Y GONDOLA

5: LOWER REMAINING STANDARD BACKS AND CORNER BACKS FROM THE TOP UNTIL THEY REST IN THE LOWER SPANNERS.

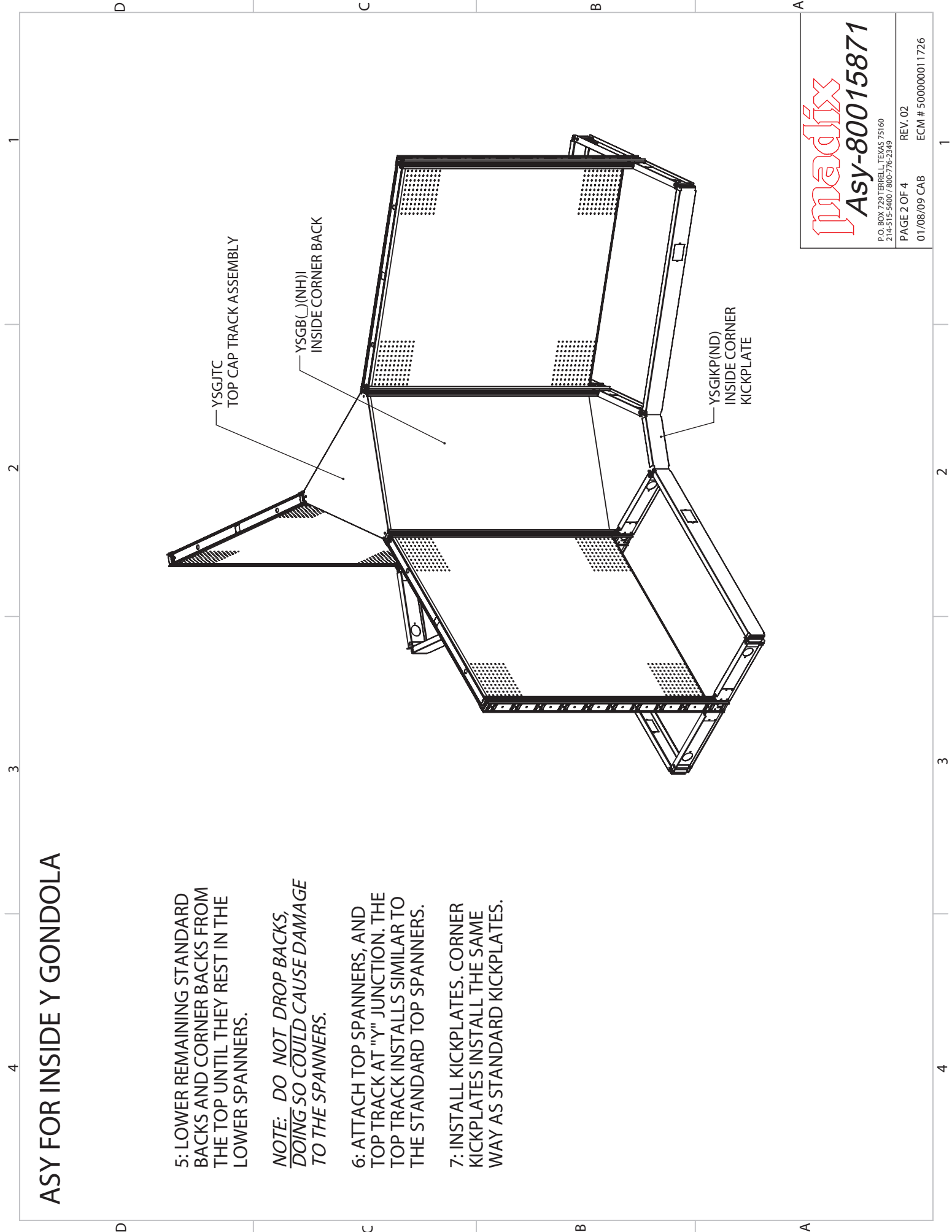
NOTE: DO NOT DROP BACKS, DOING SO COULD CAUSE DAMAGE TO THE SPANNERS.

6: ATTACH TOP SPANNERS, AND TOP TRACK AT "Y" JUNCTION. THE TOP TRACK INSTALLS SIMILAR TO THE STANDARD TOP SPANNERS.

7: INSTALL KICKPLATES. CORNER KICKPLATES INSTALL THE SAME WAY AS STANDARD KICKPLATES.



madix
Asy-80015871
P.O. BOX 729 TERRELL, TEXAS 75160
214-515-5600 / 800-776-2349
PAGE 2 OF 4
REV. 02
01/08/09 CAB
ECM # 500000011726

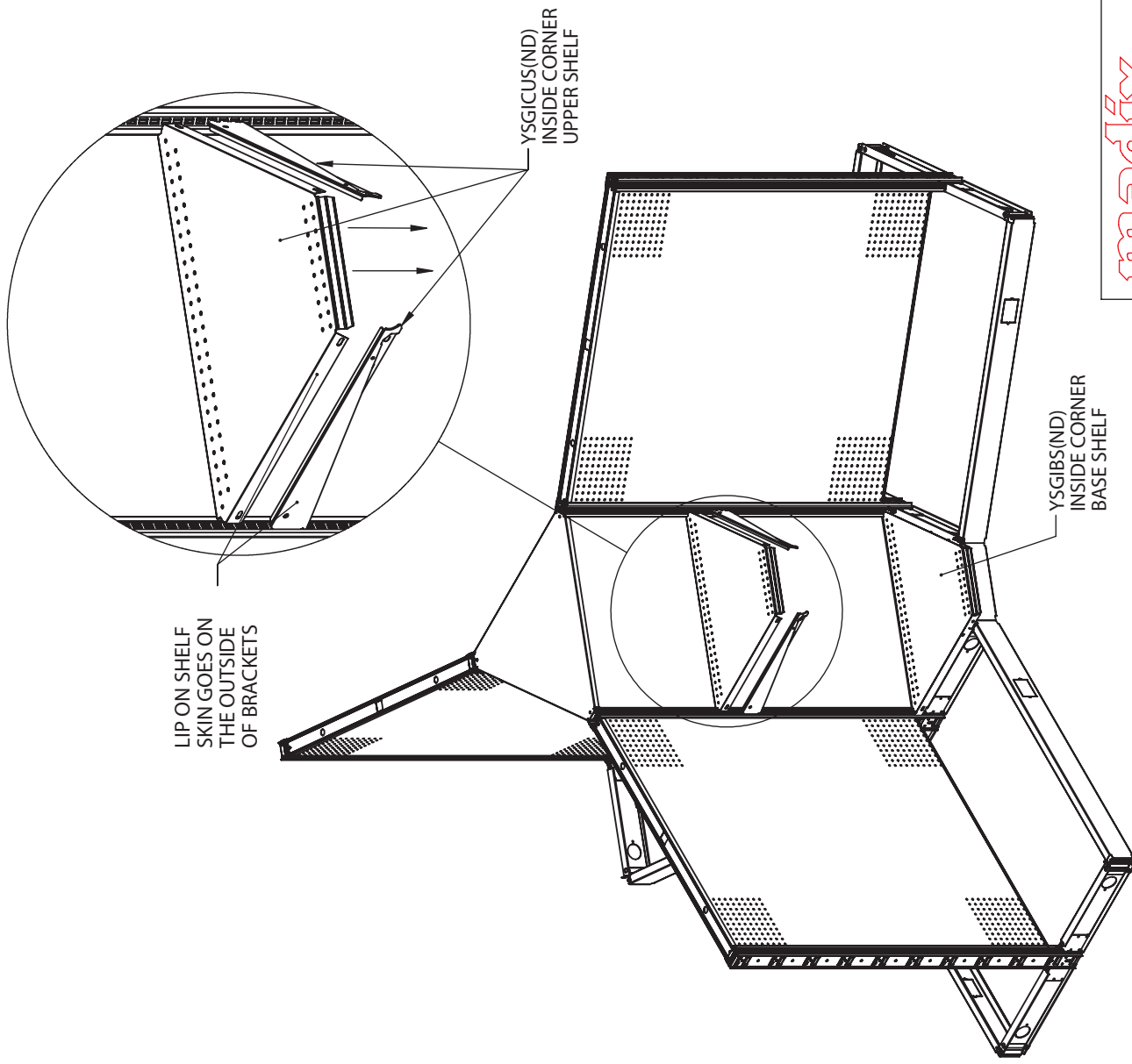


ASY FOR INSIDE Y GONDOLA

8: INSERT CORNER BASE SHELVES. THESE INSTALL IN SAME MANNER AS STANDARD BASE SHELVES.

9: INSERT THE BRACKETS FOR THE UPPER CORNER SHELVES INTO THE UPRIGHTS AT THE HEIGHT NEEDED. ONCE BRACKETS ARE IN PLACE LOWER THE SHELF SKIN OVER THE TOPS OF THE BRACKETS AS SHOWN.

CRITICAL NOTE:
CORNER SHELVES, BOTH BASE AND UPPER, WILL NEED TO BE INSTALLED FIRST TO INSURE THAT THERE IS ROOM INSIDE THE UPRIGHTS FOR ALL OF THE SHELVES.



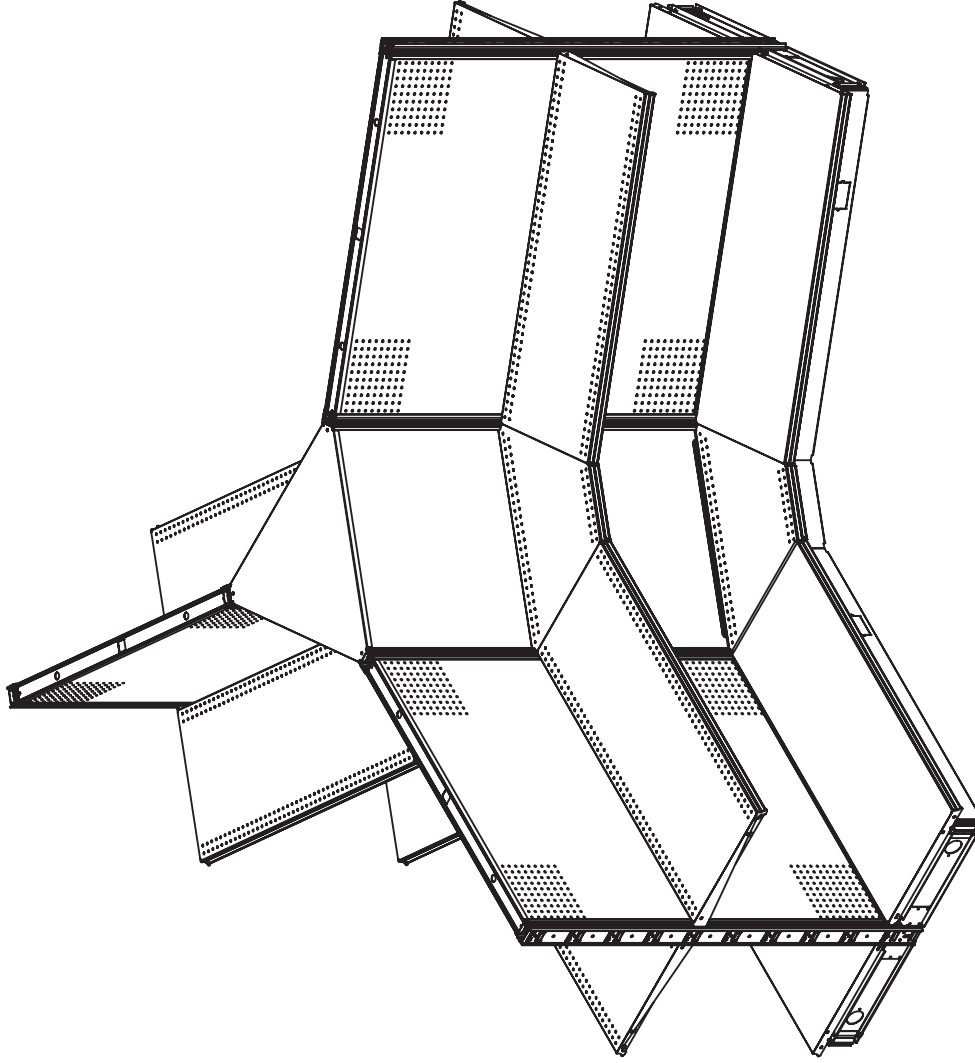
Madix
Asy-80015871

P.O. BOX 729 TERRELL, TEXAS 75160
214-515-5600 / 800-776-2349
PAGE 3 OF 4
REV. 02
01/08/09 CAB
ECM # 500000011726

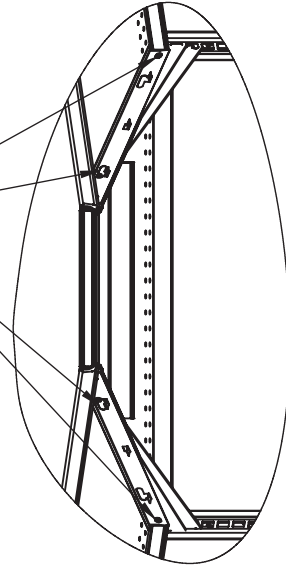
ASY FOR INSIDE Y GONDOLA

10: INSTALL THE REMAINING UPPER AND BASE SHELVES.

11: FINALLY, SECURE THE UPPER CORNER SHELVES TO THE ADJACENT SHELVES BY ATTACHING (2) 1/4-20x3/4" BOLTS AND (2) 1/4-20 NUTS THROUGH BOTH SIDES OF THE CORNER SHELVES. THIS HARDWARE WILL BE PROVIDED WITH THE UPPER CORNER SHELVES.



HARDWARE INSERTS THROUGH FRONT AND REAR OF BRACKETS



madix Asy-80015871	
P.O. BOX 729 TERRELL, TEXAS 75160 214-515-5600 / 800-776-2349	
PAGE 4 OF 4	REV. 02
01/08/09 CAB	ECM # 500000011726

