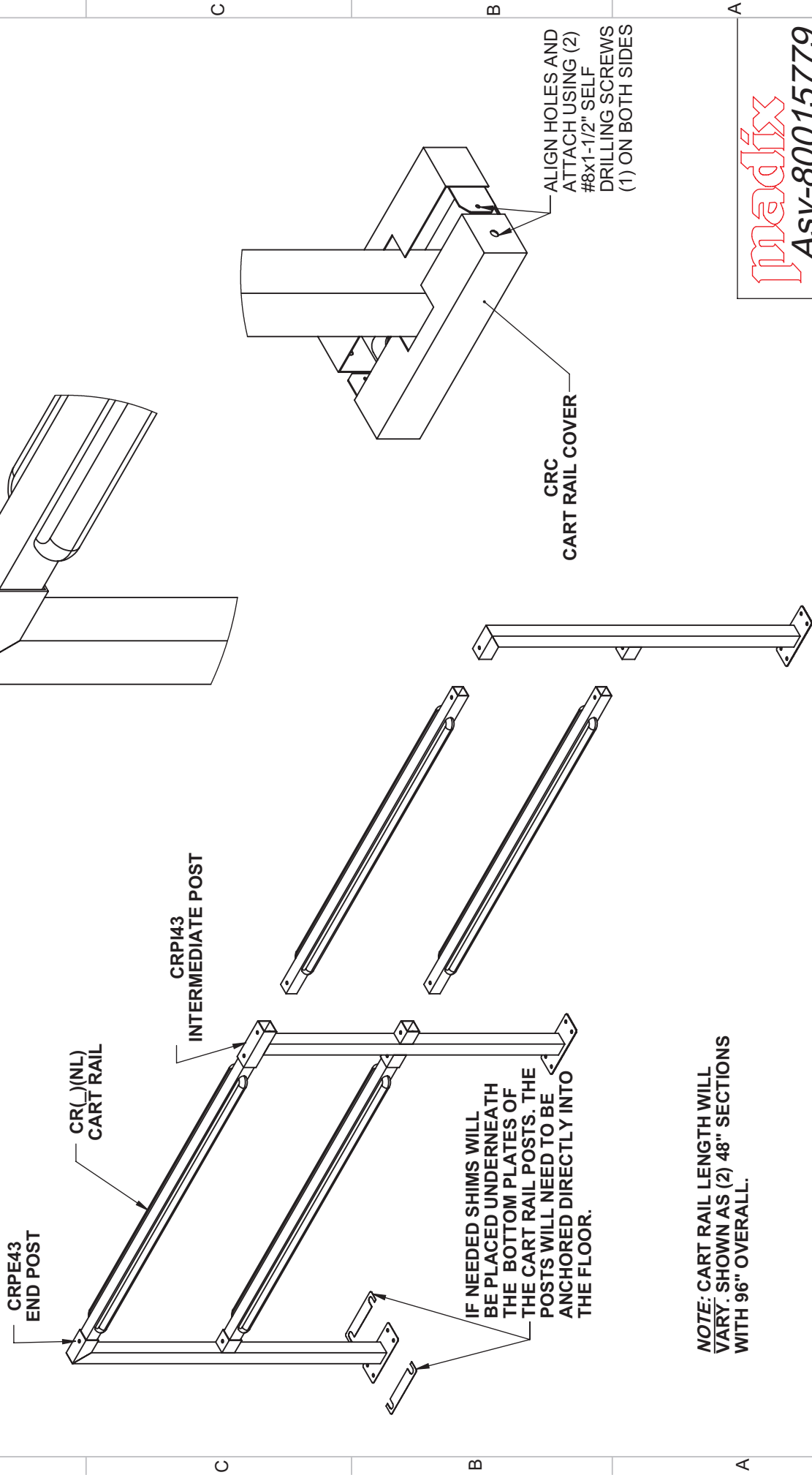


# ASY FOR CART RAIL



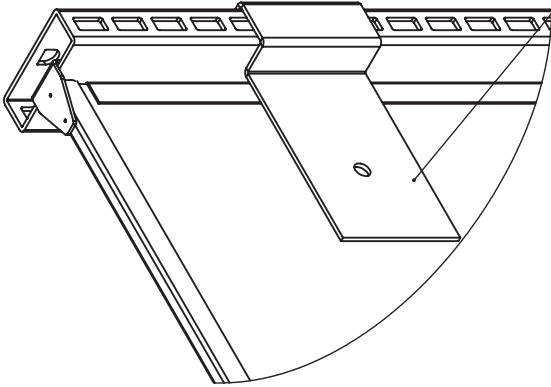
NOTE: CART RAIL LENGTH WILL VARY. SHOWN AS (2) 48" SECTIONS WITH 96" OVERALL.

<b>Madix</b>	
<b>Asy-80015779</b>	
<small>P.O. BOX 729 TERRELL, TEXAS 75160 214-515-5400 / 800-762-946</small>	
<small>PAGE 1 OF 2</small>	<small>REV. 00</small>
<small>12/15/08 CAB</small>	<small>ECM # 50000005886</small>

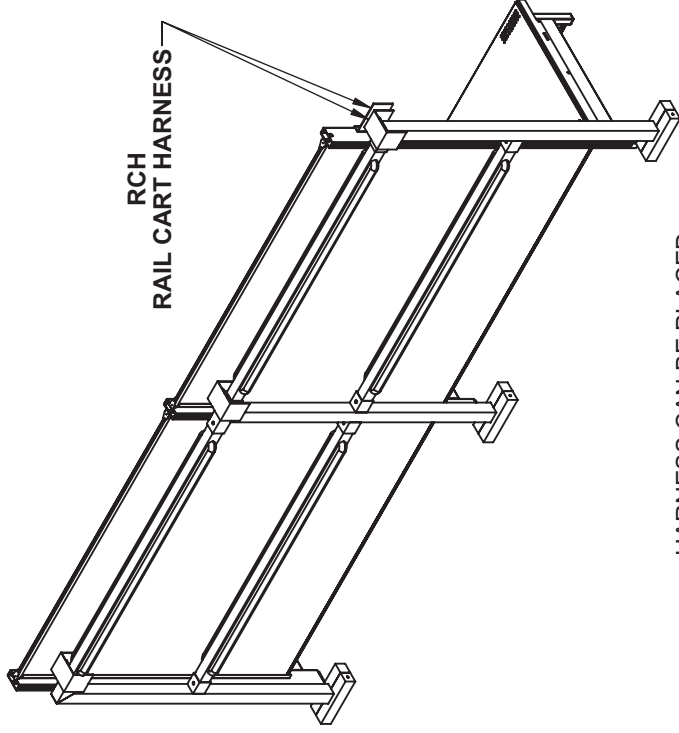
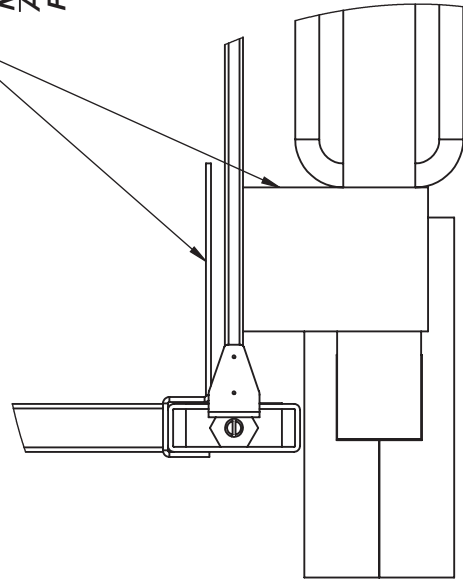
REV.	DESCRIPTION	DATE
2		1

REV.	DESCRIPTION	DATE
1		1

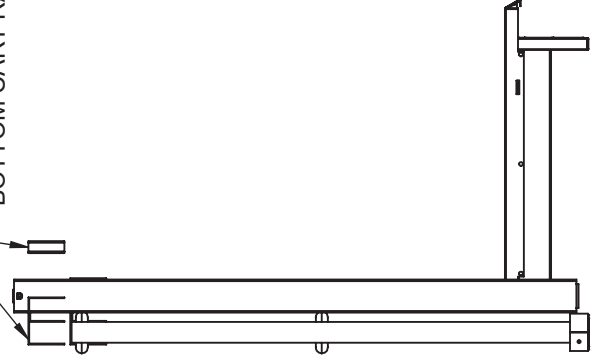
**ASY FOR CART RAIL HARNESS**  
 OPTIONAL HARNESS MAY OR MAY NOT  
 BE NEEDED.  
 HARNESS WILL ONLY WORK WITH TUBELINE  
 WALL SECTIONS.



ATTACH HARNESS PIECES  
 TOGETHER USING (1) 3/8 BOLT.  
 NOTE: WILL NEED TO DRILL  
 A 3/8" HOLE INTO THE BACK  
 PANEL FOR THE BOLT.



HARNESS CAN BE PLACED  
 ON EITHER THE TOP OR THE  
 BOTTOM CART RAIL.



**Madix**  
**Asy-80015779**  
 P.O. BOX 729 TERRELL, TEXAS 75160  
 214-515-5400 / 800-776-2946  
 PAGE 2 OF 2 REV. 00  
 12/15/08 CAB ECM # 50000005886

